

## Anti-FKBP6 Rabbit mAb

Purified Recombinant Rabbit Monoclonal Antibody

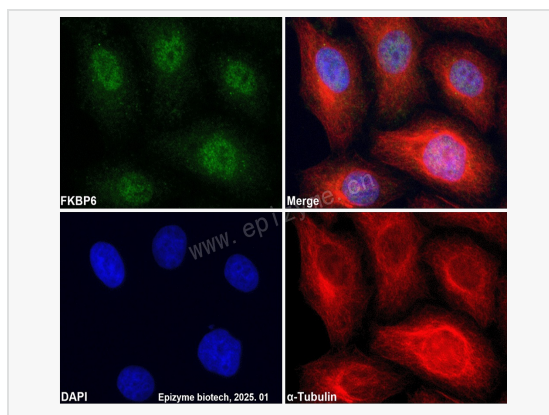
Catalog # R010585

### Product Information

Application	WB, IF (Cell)/ICC, ELISA
Reactivity	Human, Mouse, Rat
Dilution	WB 1:1,000~1:5,000; IF 1:100~1:200
Host	Rabbit
Clonality	Monoclonal
Clone No.	21M73L93
Isotype	IgG
Label	Unconjugated
Immunogen	A synthesized peptide derived from human FKBP6
Format	Affinity purified monoclonal antibody supplied in PBS with 0.01% sodium azide and 50% glycerol, pH 7.3.
Storage	Shipped on wet ice. Store at -20°C. Stable for 24 months from date of receipt. Aliquoting is unnecessary for -20°C storage.
Precautions	Anti-FKBP6 Rabbit mAb [21M73L93] is for research use only and not for use in diagnostic or therapeutic procedures.

### Protein Information

Synonyms	36 kDa FK506 binding protein, 36 kDa FK506-binding protein, 36 kDa FKBP, EC 5.2.1.8, FK506 binding protein 6, FK506-binding protein 6, FKBP 36, FKBP-36, FKBP-6, FKBP36, fkbp6, FKBP6_HUMAN, Immunophilin FKBP36, Peptidyl prolyl cis trans isomerase, Peptidyl-prolyl cis-trans isomerase FKBP6, PPIase, PPIase FKBP6, Rotamase.
Calculated MW	Calculated MW: 37 kDa; Observed MW: 37 kDa
Uniprot ID	O75344
Gene ID	8468
Background	The protein encoded by this gene is a cis-trans peptidyl-prolyl isomerase that may function in immunoregulation and basic cellular processes involving protein folding and trafficking. This gene is located in a chromosomal region that is deleted in Williams-Beuren syndrome. Defects in this gene may cause male infertility. There are multiple pseudogenes for this gene located nearby on chromosome 7. Alternative splicing results in multiple transcript variants. [provided by RefSeq, Jul 2013]
Tissue Location	Detected in all tissues examined, with higher expression in testis, heart, skeletal muscle, liver, and kidney.



Immunofluorescence - Anti-FKBP6 Rabbit mAb [21M73L93]

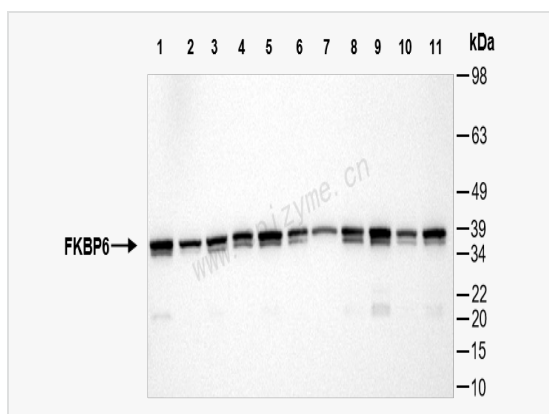
Sample: HeLa cells

The cells were fixed with 4% paraformaldehyde (10 min), permeabilized with 0.5% Triton X-100 for 10 minutes and then blocked with 5% BSA in 0.1% PBS-Tween for 0.5 hours.

Primary antibodies: R010585 at 1:100 dilution and  $\alpha$ -tubulin Mouse Monoclonal Antibody (Cat. No. LF209) at 1:100 dilution

Secondary antibodies: Goat anti-Rabbit (488) at 1:1,000 dilution (shown in green) and Goat anti-Mouse (555) at 1:1,000 dilution (shown in red)

Nuclei were stained with DAPI (shown in blue).



Western Blot - Anti-FKBP6 Rabbit mAb [21M73L93]

All lanes: R010585 at 1:5,000 dilution

Lane 1: HeLa (Human cervix adenocarcinoma epithelial cell) whole cell lysates

Lane 2: HepG2 (Human hepatocarcinoma epithelial cell) whole cell lysates

Lane 3: HCT116 (Human colorectal carcinoma epithelial cell) whole cell lysates

Lane 4: U2OS (Human osteosarcoma epithelial cell) whole cell lysates

Lane 5: T24 (Human bladder cancer epithelial cell) whole cell lysates

Lane 6: Jurkat (Human T lymphocytic leukemia cell) whole cell lysates

Lane 7: 293T (Human embryonic kidney cell) whole cell lysates

Lane 8: SCC-9 (Human tongue squamous carcinoma epithelial cell) whole cell lysates

Lane 9: C2C12 (Mouse myoblasts epithelial cell) whole cell lysates

Lane 10: Raw264.7 (Mouse mononuclear macrophage leukemia cell) whole cell lysates

Lane 11: PC-12 (Rat adrenal pheochromocytoma epithelial cell) whole cell lysates

Lysates/proteins at 10  $\mu$ g per lane.

Secondary antibody: Goat Anti-Rabbit IgG (H+L), HRP Conjugated (Cat. No. LF102) at 1:5,000 dilution

Predicted band size: 37 kDa

Observed band size: 37 kDa

Developed using the ECL technique (Cat. No. SQ201).