

Anti-CDC37 Rabbit mAb

Purified Recombinant Rabbit Monoclonal Antibody

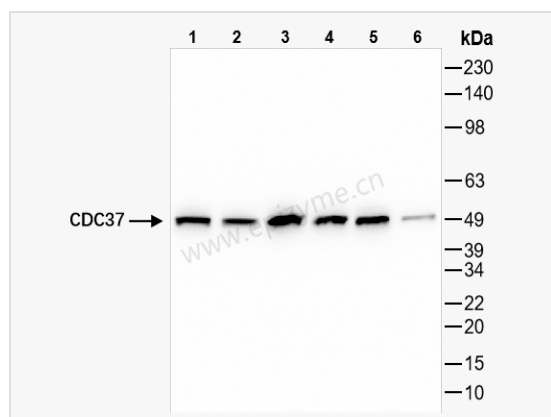
Catalog # R013032

Product Information

| | |
|-------------|---|
| Application | WB, IF (Cell)/ICC, ELISA |
| Reactivity | Human |
| Dilution | WB 1:1,000~1:5,000; IF 1:100~1:200 |
| Host | Rabbit |
| Clonality | Monoclonal |
| Clone No. | 85K80L49 |
| Isotype | IgG |
| Label | Unconjugated |
| Immunogen | A synthesized peptide derived from human Cdc37 |
| Format | Affinity purified monoclonal antibody supplied in PBS with 0.02% sodium azide and 50% glycerol, pH 7.3. |
| Storage | Shipped on wet ice. Store at -20°C. Stable for 24 months from date of receipt. Aliquoting is unnecessary for -20°C storage. |
| Precautions | Anti-CDC37 Rabbit mAb [85K80L49] is for research use only and not for use in diagnostic or therapeutic procedures. |

Protein Information

| | |
|-------------------|--|
| Synonyms | CDC37A; CDC37; Hsp90 co-chaperone Cdc37; Hsp90 chaperone protein kinase-targeting subunit; p50Cdc37. |
| Calculated MW | Calculated MW: 45 kDa; Observed MW: 50 kDa |
| Uniprot ID | Q16543 |
| Gene ID | 11140 |
| Background | Co-chaperone that binds to numerous kinases and promotes their interaction with the Hsp90 complex, resulting in stabilization and promotion of their activity (PubMed:8666233) |
| Cellular Location | Cytoplasm. |



Western Blot - Anti-CDC37 Rabbit mAb [85K80L49]

All lanes: R013032 at 1:5,000 dilution

Lane 1: HeLa (Human cervix adenocarcinoma epithelial cell) whole cell lysates

Lane 2: HepG2 (Human hepatocarcinoma epithelial cell) whole cell lysates

Lane 3: HCT116 (Human colorectal carcinoma epithelial cell) whole cell lysates

Lane 4: 293T (Human embryonic kidney cell) whole cell lysates

Lane 5: K562 (Human chronic myeloid leukemia cell) whole cell lysates

Lane 6: SH-SY5Y (Human neuroblastoma epithelial cell) whole cell lysates

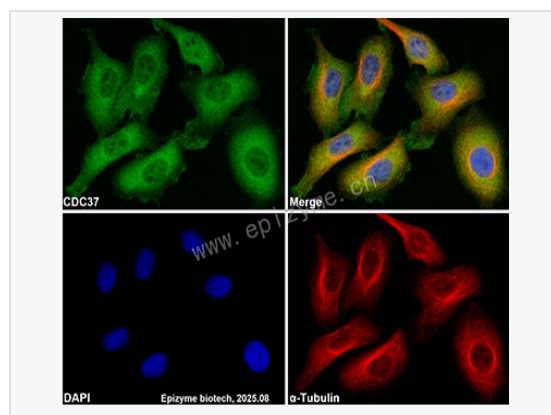
Lysates/proteins at 10 µg per lane.

Secondary antibody: Goat Anti-Rabbit IgG (H+L), HRP Conjugated (Cat. No. LF102) at 1:5,000 dilution

Predicted band size: 45 kDa

Observed band size: 50 kDa

Developed using the ECL technique (Cat. No. SQ201).



Immunofluorescence - Anti-CDC37 Rabbit mAb [85K80L49]

Sample: HeLa cells

The cells were fixed with 4% paraformaldehyde (10 min), permeabilized with 0.5% Triton X-100 for 10 minutes and then blocked with 5% BSA in 0.1% PBS-Tween for 0.5 hours.

Primary antibodies: R013032 at 1:100 dilution and α -tubulin Mouse Monoclonal

Antibody (Cat. No. LF209) at 1:100 dilution

Secondary antibodies: Goat anti-Rabbit (488) at 1:1,000 dilution (shown in green) and Goat anti-Mouse (555) at 1:1,000 dilution (shown in red)

Nuclei were stained with DAPI (shown in blue).