

## Anti-BUBR1 Rabbit mAb

Purified Recombinant Rabbit Monoclonal Antibody

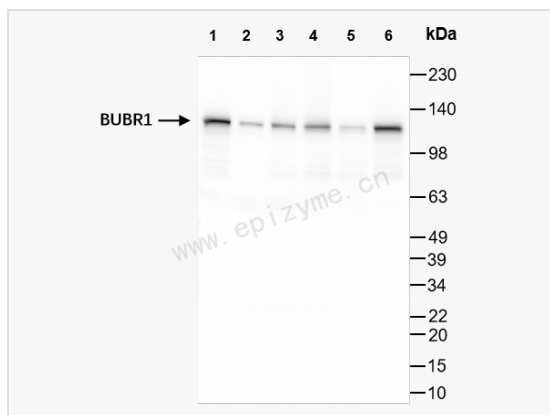
Catalog # R010405

### Product Information

Application	WB, ELISA
Reactivity	Human
Dilution	WB 1:1,000~1:2,000
Host	Rabbit
Clonality	Monoclonal
Clone No.	58M23M63
Isotype	IgG
Label	Unconjugated
Immunogen	A synthesized peptide derived from human BubR1
Format	Affinity purified monoclonal antibody supplied in PBS with 0.01% sodium azide and 50% glycerol, pH 7.3.
Storage	Shipped on wet ice. Store at -20°C. Stable for 24 months from date of receipt. Aliquoting is unnecessary for -20°C storage.
Precautions	Anti-BUBR1 Rabbit mAb [58M23M63] is for research use only and not for use in diagnostic or therapeutic procedures.

### Protein Information

Synonyms	Beta homolog of <i>S. cerevisiae</i> BUB 1; Beta homolog of <i>S. cerevisiae</i> budding uninhibited by benzimidazoles; BUB 1B; BUB1 budding uninhibited by benzimidazoles 1 homolog beta; Bub1A; BUB1B; BUB1B_HUMAN; BUB1beta; BUBR1; Budding Uninhibited by Benzimidazoles 1 beta; Budding uninhibited by benzimidazoles 1 homolog beta (yeast); hBUBR1; MAD3/BUB1 related protein kinase; MAD3/BUB1-related protein kinase; MAD3L; Mitotic checkpoint gene BUB1B; Mitotic checkpoint kinase MAD3L; Mitotic checkpoint serine/threonine protein kinase BUB1 beta; Mitotic checkpoint serine/threonine-protein kinase BUB1 beta; MVA1; OTTHUMP00000160319; Protein SSK1; SSK 1; SSK1.
Calculated MW	Calculated MW: 120 kDa; Observed MW: 120 kDa
Uniprot ID	O60566
Gene ID	701
Background	This gene encodes a kinase involved in spindle checkpoint function. The protein has been localized to the kinetochore and plays a role in the inhibition of the anaphase-promoting complex/cyclosome (APC/C), delaying the onset of anaphase and ensuring proper chromosome segregation. Impaired spindle checkpoint function has been found in many forms of cancer. [provided by RefSeq, Jul 2008]
Cellular Location	Cytoplasm. Nucleus. Chromosome > centromere > kinetochore. Cytoplasm > cytoskeleton > centrosome. Cytoplasmic in interphase cells. Associates with the kinetochores in early prophase. Kinetochore localization requires BUB1, PLK1 and CASC5.
Tissue Location	Highly expressed in thymus followed by spleen. Preferentially expressed in tissues with a high mitotic index.



Western Blot - Anti-BUBR1 Rabbit mAb [58M23M63]

All lanes: R010405 at 1:1,000 dilution

Lane 1: HeLa (Human cervix adenocarcinoma epithelial cell) whole cell lysates

Lane 2: Huh1 (Human hepatocarcinoma epithelial cell) whole cell lysates

Lane 3: HepG2 (Human hepatocarcinoma epithelial cell) whole cell lysates

Lane 4: 293T (Human embryonic kidney cell) whole cell lysates

Lane 5: U87 (Human malignant glioblastoma epithelial cells) whole cell lysates

Lane 6: SH-SY5Y (Human neuroblastoma epithelial cell) whole cell lysates

Lysates/proteins at 10 µg per lane.

Secondary antibody: Goat Anti-Rabbit IgG (H+L), HRP Conjugated (Cat. No. LF102) at 1:5,000 dilution

Predicted band size: 120 kDa

Observed band size: 120 kDa

Developed using the ECL technique (Cat. No. SQ201).