

## Anti-VEGFD Rabbit mAb

Purified Recombinant Rabbit Monoclonal Antibody

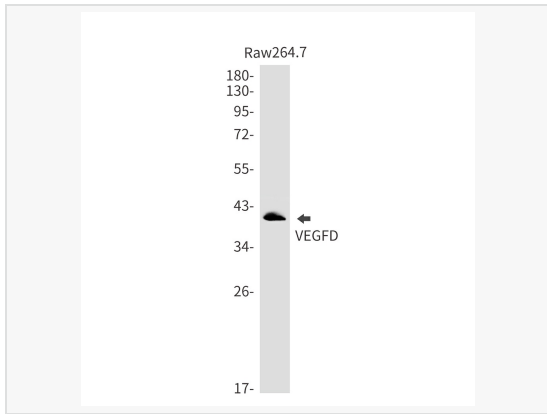
Catalog # R012519

### Product Information

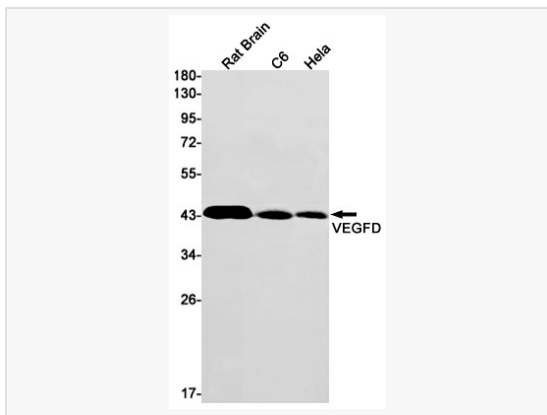
Application	WB, IHC-P/IF (Tissue-P), IF (Cell)/ICC, ELISA
Reactivity	Human
Dilution	WB 1:1,000~1:3,000; IHC-P 1:100~1:200; IF 1:100~1:200
Host	Rabbit
Clonality	Monoclonal
Clone No.	10M31K47
Isotype	IgG
Label	Unconjugated
Immunogen	A synthesized peptide derived from human VEGFD
Format	Affinity purified monoclonal antibody supplied in PBS with 0.01% sodium azide and 50% glycerol, pH 7.3.
Storage	Shipped on wet ice. Store at -20°C. Stable for 24 months from date of receipt. Aliquoting is unnecessary for -20°C storage.
Precautions	Anti-VEGFD Rabbit mAb [10M31K47] is for research use only and not for use in diagnostic or therapeutic procedures.

### Protein Information

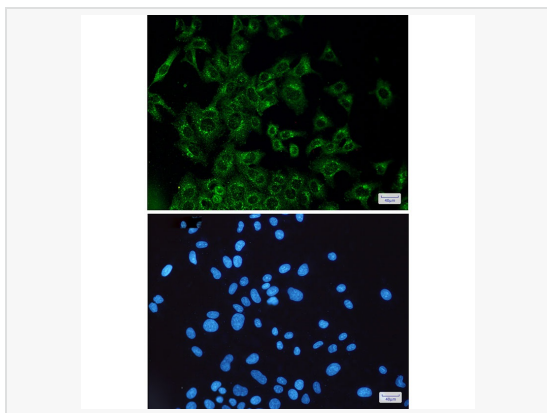
Synonyms	c-fos induced growth factor, c-fos induced growth factor (vascular endothelial growth factor D), c-fos induced growth factor, c-fos-induced growth factor, FIGF, Vascular endothelial growth factor D, Vascular endothelial growth factor D precursor, Vascular endothelial growth factor D precursor, VEGF D, VEGF-D, VEGFD, VEGFD_HUMAN.
Calculated MW	Calculated MW: 40 kDa; Observed MW: 40 kDa
Uniprot ID	O43915
Gene ID	2277
Background	The protein encoded by this gene is a member of the platelet-derived growth factor/vascular endothelial growth factor (PDGF/VEGF) family and is active in angiogenesis, lymphangiogenesis, and endothelial cell growth. This secreted protein undergoes a complex proteolytic maturation, generating multiple processed forms which bind and activate VEGFR-2 and VEGFR-3 receptors. This protein is structurally and functionally similar to vascular endothelial growth factor C. Read-through transcription has been observed between this locus and the upstream PIR (GeneID 8544) locus. [provided by RefSeq, Feb 2011]
Cellular Location	Secreted.
Tissue Location	Highly expressed in lung, heart, small intestine and fetal lung, and at lower levels in skeletal muscle, colon, and pancreas.



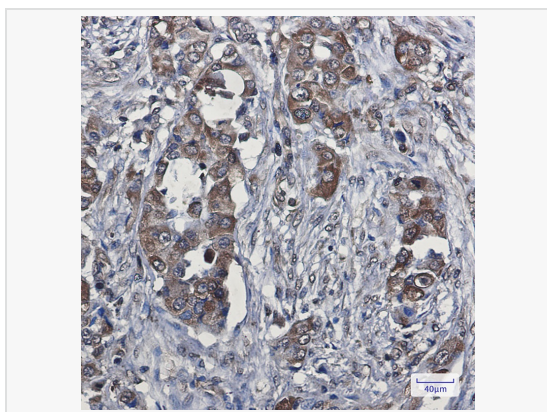
Western blot analysis of VEGFD in Raw264.7 lysates using VEGFD antibody.



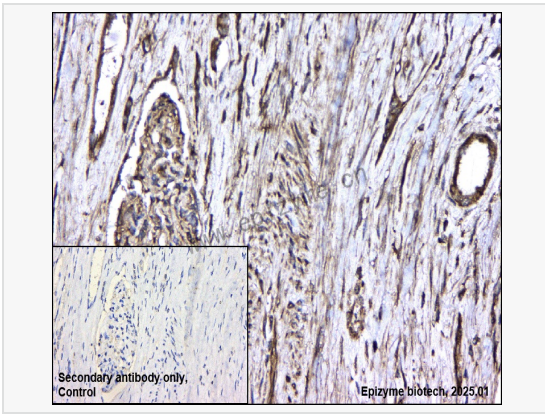
Western blot analysis of VEGFD in rat Brain, C6, HeLa lysates using VEGFD antibody.



Immunocytochemistry analysis of VEGFD (green) in HeLa using VEGFD antibody and DAPI (blue)



Immunohistochemistry analysis of paraffin-embedded Human lung cancer using VEGFD antibody. High-pressure and temperature Sodium Citrate pH 6.0 was used for antigen retrieval.



#### Immunohistochemistry - Anti-VEGFD Rabbit mAb [10M31K47]

Sample: Paraformaldehyde-fixed, paraffin embedded human renal carcinoma tissue  
Heat mediated antigen retrieval with Tris-EDTA buffer (pH 9.0) for 30 mins.

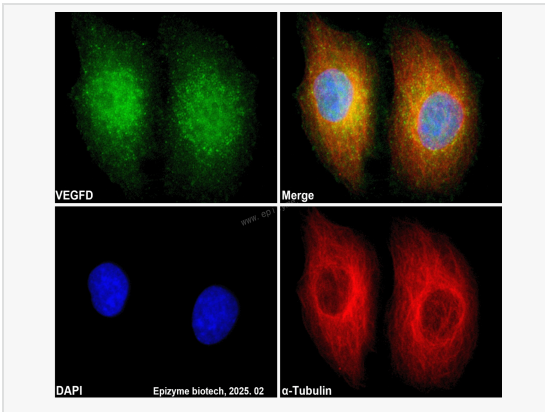
Primary antibody: R012519 at 1:200 dilution

Secondary antibody: Goat Anti-Rabbit IgG (H+L), HRP conjugated at 1:1,000 dilution  
DAB was used as the chromogen.

Counter stained with hematoxylin.

Positive/negative staining were presented.

Only the secondary antibody was used as the negative control.



#### Immunofluorescence - Anti-VEGFD Rabbit mAb [10M31K47]

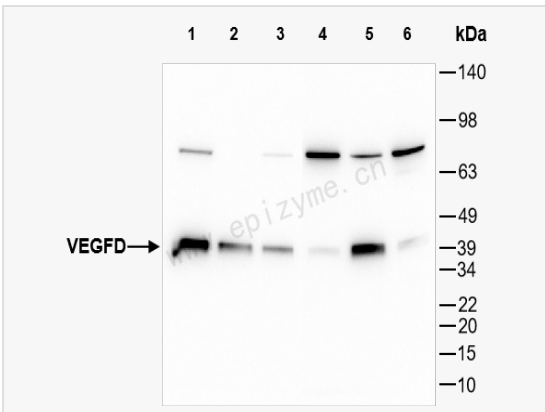
Sample: HeLa cells

The cells were fixed with 4% paraformaldehyde (10 min), permeabilized with 0.5% Triton X-100 for 10 minutes and then blocked with 5% BSA in 0.1% PBS-Tween for 0.5 hours.

Primary antibodies: R012519 at 1:100 dilution and  $\alpha$ -tubulin Mouse Monoclonal Antibody (Cat. No. LF209) at 1:100 dilution

Secondary antibodies: Goat anti-Rabbit (488) at 1:1,000 dilution (shown in green) and Goat anti-Mouse (555) at 1:1,000 dilution (shown in red)

Nuclei were stained with DAPI (shown in blue).



#### Western Blot - Anti-VEGFD Rabbit mAb [10M31K47]

All lanes: R012519 at 1:3,000 dilution

Lane 1: HeLa (Human cervix adenocarcinoma epithelial cell) whole cell lysates

Lane 2: HepG2 (Human hepatocarcinoma epithelial cell) whole cell lysates

Lane 3: HCT116 (Human colorectal carcinoma epithelial cell) whole cell lysates

Lane 4: C2C12 (Mouse myoblasts epithelial cell) whole cell lysates

Lane 5: Raw264.7 (Mouse mononuclear macrophage leukemia cell) whole cell lysates

Lane 6: PC-12 (Rat adrenal pheochromocytoma epithelial cell) whole cell lysates

Lysates/proteins at 10  $\mu$ g per lane.

Secondary antibody: Goat Anti-Rabbit IgG (H+L), HRP Conjugated (Cat. No. LF102) at 1:5,000 dilution

Predicted band size: 40 kDa

Observed band size: 40 kDa

Developed using the ECL technique (Cat. No. SQ201).