

Anti-Thymidine Kinase Rabbit mAb

Purified Rabbit Monoclonal Antibody

Catalog # R011468

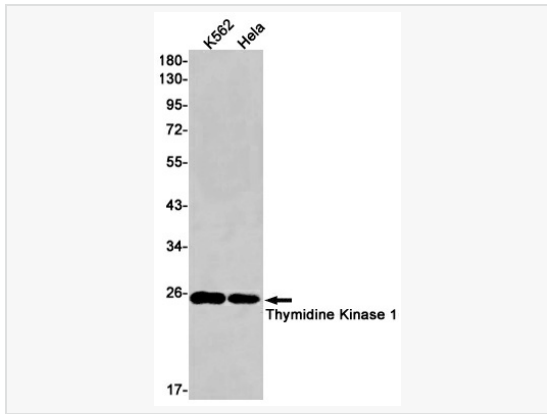
Product Information

Application	WB, IP, ELISA
Reactivity	Human
Dilution	WB 1:500~1:1,000; IP 1:20
Host	Rabbit
Clonality	Monoclonal
Clone No.	69L11M27
Isotype	IgG
Label	Unconjugated
Immunogen	A synthetic peptide of human Thymidine Kinase 1
Format	Buffer System: 50mM Tris-Glycine(pH 7.4), 0.15M NaCl, 40% Glycerol, 0.01% Sodium azide and 0.05% BSA Purification: Affinity Purified.
Storage	Shipped on wet ice. Store at -20°C. Stable for 24 months from date of receipt. Aliquoting is unnecessary for -20°C storage.
Precautions	Anti-Thymidine Kinase antibody [69L11M27] is for research use only and not for use in diagnostic or therapeutic procedures.

Protein Information

Synonyms	EC 27121, KITH, TK-1, TK1, Thymidine kinase 1, cytosolic.
Calculated MW	Calculated MW: 25 kDa; Observed MW: 25 kDa
Uniprot ID	P04183
Gene ID	7083
Background	TK is a cytosolic thymidine kinase. Phosphorylated during mitosis. Its enzymatic activity is high in proliferating cells and peaks during the S-phase of the cell cycle; it is very low in resting cells.

Validation Images



Western blot analysis of Thymidine Kinase 1 in K562, HeLa lysates using Thymidine Kinase antibody.