

Anti-S6K1 Rabbit mAb

Purified Recombinant Rabbit Monoclonal Antibody

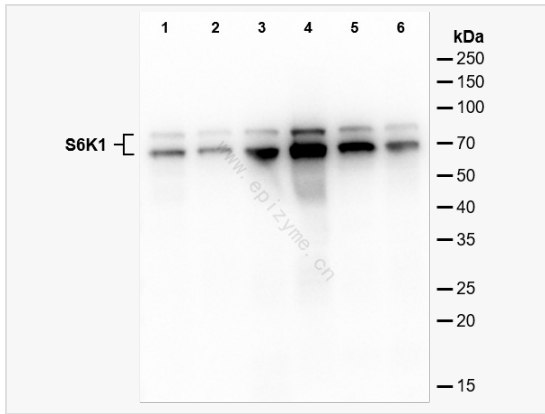
Catalog # R013125

Product Information

Application	IHC-P/IF (Tissue-P), WB, ELISA, IF (Cell)/ICC
Reactivity	Human, Mouse, Rat
Dilution	WB 1:1,000~1:2,000; IHC-P 1:200; IF 1:100
Host	Rabbit
Clonality	Monoclonal
Clone No.	62L61L13
Isotype	IgG
Label	Unconjugated
Immunogen	A synthesized peptide derived from human S6K1
Format	Affinity purified monoclonal antibody supplied in PBS with 0.01% sodium azide and 50% glycerol, pH 7.3.
Storage	Shipped on wet ice. Store at -20°C. Stable for 24 months from date of receipt. Aliquoting is unnecessary for -20°C storage.
Precautions	Anti-S6K1 antibody [62L61L13] is for research use only and not for use in diagnostic or therapeutic procedures.

Protein Information

Synonyms	RPS6KB1, STK14A, Ribosomal protein S6 kinase beta-1, S6K-beta-1, S6K1, 70 kDa ribosomal protein S6 kinase 1, P70S6K1, p70-S6K 1, Ribosomal protein S6 kinase I, Serine/threonine-protein kinase 14A, p70 ribosomal S6 kinase alpha, p70 S6 kinas.
Calculated MW	Calculated MW: 70 kDa; Observed MW: 70 kDa, 80 kDa
Uniprot ID	P23443
Gene ID	6198
Background	This gene encodes a member of the RSK (ribosomal S6 kinase) family of serine/threonine kinases. This kinase contains 2 non-identical kinase catalytic domains and phosphorylates several residues of the S6 ribosomal protein.



Western Blot - Anti-S6K1 Rabbit mAb [62L61L13]

All lanes: R013125 at 1:1,000 dilution

Lane 1: HeLa (human cervix adenocarcinoma epithelial cell) whole cell lysates

Lane 2: MCF7 (human breast adenocarcinoma epithelial cell) whole cell lysates

Lane 3: Jurkat (human T lymphocytic leukemia cell) whole cell lysates

Lane 4: HCT116 (human colorectal carcinoma epithelial cell) whole cell lysates

Lane 5: T24 (human bladder cancer epithelial cell) whole cell lysates

Lane 6: HepG2 (human hepatocellular carcinoma epithelial cell) whole cell lysates

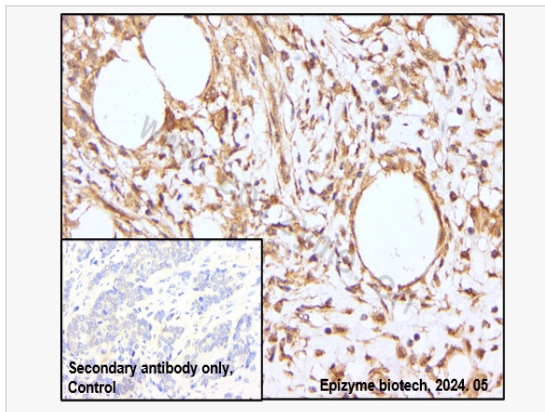
Lysates/proteins at 10 µg per lane.

Secondary antibody: Goat Anti-Rabbit IgG(H+L), HRP Conjugated (Cat. No. LF102) at 1:5,000 dilution

Predicted band size: 70 kDa

Observed band size: 70 kDa, 80 kDa

Developed using the ECL technique (Cat. No. SQ201).



Immunohistochemistry - Anti-S6K1 Rabbit mAb [62L61L13]

Sample: Paraformaldehyde-fixed, paraffin embedded human breast carcinoma tissue

Heat mediated antigen retrieval with Tris-EDTA buffer (pH 9.0) for 30 mins.

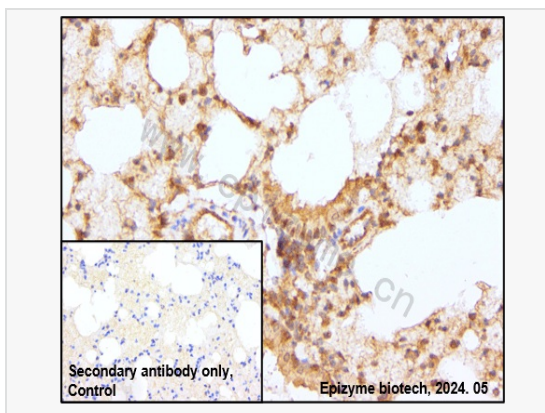
Primary antibody: R013125 at 1:200 dilution

Secondary antibody: Goat Anti-Rabbit IgG (H+L), HRP conjugated at 1:1,000 dilution
DAB was used as the chromogen.

Counter stained with hematoxylin.

Positive/negative staining were presented.

Only the secondary antibody was used as the negative control.



Immunohistochemistry - Anti-S6K1 Rabbit mAb [62L61L13]

Sample: Paraformaldehyde-fixed, paraffin embedded mouse lung tissue

Heat mediated antigen retrieval with Tris-EDTA buffer (pH 9.0) for 30 mins.

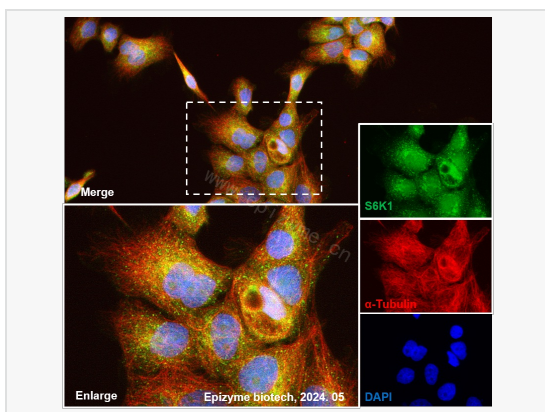
Primary antibody: R013125 at 1:200 dilution

Secondary antibody: Goat Anti-Rabbit IgG (H+L), HRP conjugated at 1:1,000 dilution
DAB was used as the chromogen.

Counter stained with hematoxylin.

Positive/negative staining were presented.

Only the secondary antibody was used as the negative control.



Immunofluorescence - Anti-S6K1 Rabbit mAb [62L61L13]

Sample: A431 cells

The cells were fixed with 4% paraformaldehyde (10 min), permeabilized with 0.5% Triton X-100 for 10 minutes and then blocked with 5% BSA in 0.1% PBS-Tween for 0.5 hours.

Primary antibodies: R013125 at 1:100 dilution and α-tubulin Mouse Monoclonal Antibody (Cat. No. LF209) at 1:100 dilution

Secondary antibodies: Goat anti-Rabbit (488) at 1:1,000 dilution (shown in green) and Goat anti-Mouse (555) at 1:1,000 dilution (shown in red)

Nuclei were stained with DAPI (shown in blue).