

## Anti-RAB7 Rabbit mAb

Purified Recombinant Rabbit Monoclonal Antibody

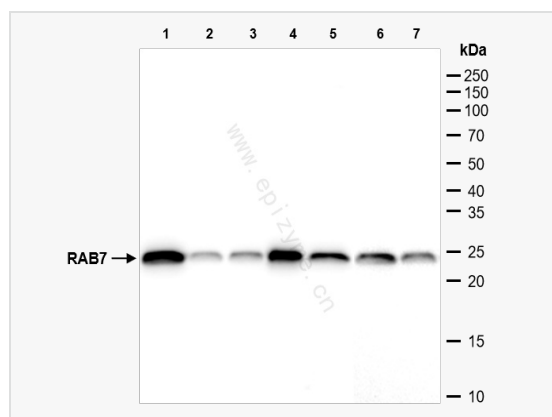
Catalog # R013146

### Product Information

Application	ELISA, WB
Reactivity	Human, Mouse, Rat
Dilution	WB 1:1,000~1:2,000
Host	Rabbit
Clonality	Monoclonal
Clone No.	32K32K61
Isotype	IgG
Label	Unconjugated
Immunogen	A synthesized peptide derived from human RAB7
Format	Affinity purified monoclonal antibody supplied in PBS with 0.01% sodium azide and 50% glycerol, pH 7.3.
Storage	Shipped on wet ice. Store at -20°C. Stable for 24 months from date of receipt. Aliquoting is unnecessary for -20°C storage.
Precautions	Anti-RAB7 Rabbit mAb [32K32K61] is for research use only and not for use in diagnostic or therapeutic procedures.

### Protein Information

Synonyms	RAB7, PRO2706.
Calculated MW	Calculated MW: 24 kDa; Observed MW: 24 kDa
Uniprot ID	P51149
Gene ID	7879
Background	RAB family members are small, RAS-related GTP-binding proteins that are important regulators of vesicular transport. Each RAB protein targets multiple proteins that act in exocytic / endocytic pathways. This gene encodes a RAB family member that regulates vesicle traffic in the late endosomes and also from late endosomes to lysosomes. This encoded protein is also involved in the cellular vacuolation of the VacA cytotoxin of <i>Helicobacter pylori</i> . Mutations at highly conserved amino acid residues in this gene have caused some forms of Charcot-Marie-Tooth (CMT) type 2 neuropathies. [provided by RefSeq, Jul 2008]



Western Blot - Anti-Rab7 Rabbit mAb [32K32K61]

All lanes: R013146 at 1:1,000 dilution

Lane 1: C2C12 (Mouse myoblasts epithelial cell) whole cell lysates

Lane 2: HepG2 (Human hepatocellular carcinoma epithelial cell) whole cell lysates

Lane 3: MCF7 (Human breast adenocarcinoma epithelial cell) whole cell lysates

Lane 4: T24 (Human bladder cancer epithelial cell) whole cell lysates

Lane 5: Raw264.7 (Mouse Abelson murine leukemia virus-induced tumor macrophage) whole cell lysates

Lane 6: Balb/c mouse brain whole tissue lysates

Lysates/proteins at 10  $\mu$ g per lane.

Secondary antibody: Goat Anti-Rabbit IgG(H+L), HRP Conjugated (Cat. No. LF102) at 1:5,000 dilution

Predicted band size: 24 kDa

Observed band size: 24 kDa

Developed using the ECL technique (Cat. No. SQ201).