

Anti-Rab10 Rabbit mAb

Purified Recombinant Rabbit Monoclonal Antibody

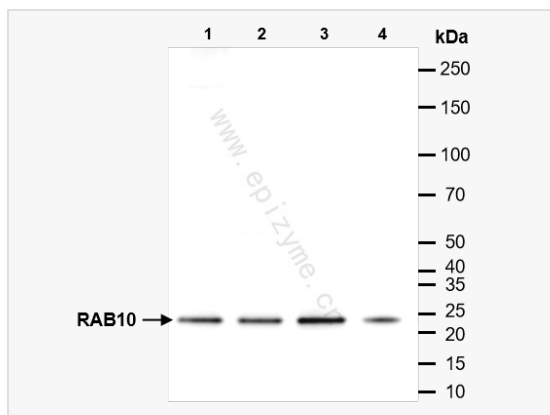
Catalog # R012942

Product Information

Application	ELISA, WB, IHC-P/IF (Tissue-P)
Reactivity	Human, Mouse, Rat
Dilution	WB 1:1,000~1:2,000; IHC-P 1:100~1:200; IF 1:100~1:200
Host	Rabbit
Clonality	Monoclonal
Clone No.	17M75L49
Isotype	IgG
Label	Unconjugated
Immunogen	Recombinant protein of human RAB10
Format	Affinity purified monoclonal antibody supplied in PBS with 0.01% sodium azide and 50% glycerol, pH 7.3.
Storage	Shipped on wet ice. Store at -20°C. Stable for 24 months from date of receipt. Aliquoting is unnecessary for -20°C storage.
Precautions	Anti-Rab10 Rabbit mAb [17M75L49] is for research use only and not for use in diagnostic or therapeutic procedures.

Protein Information

Synonyms	GTP binding protein RAB10, Rab10, RAB10 member RAS oncogene family, RAB10_HUMAN, Ras related GTP binding protein, Ras related GTP binding protein RAB10, Ras-related protein Rab-10.
Calculated MW	Calculated MW: 23 kDa; Observed MW: 23 kDa
Uniprot ID	P61026
Gene ID	10890
Background	RAB10 belongs to the RAS (see HRAS; MIM 190020) superfamily of small GTPases. RAB proteins localize to exocytic and endocytic compartments and regulate intracellular vesicle trafficking (Bao et al., 1998 [PubMed 9918381]).[supplied by OMIM, Mar 2009]
Cellular Location	Cytoplasmic vesicle membrane. Golgi apparatus membrane. Golgi apparatus, trans-Golgi network membrane. Endosome membrane. Recycling endosome membrane. Cytoplasmic vesicle, phagosome membrane. Cell projection, cilium. Endoplasmic reticulum membrane. Associates with SLC2A4/GLUT4 storage vesicles (PubMed:22908308). Localizes to the base of the cilium (PubMed:20576682). Transiently associates with phagosomes (By similarity). Localizes to the endoplasmic reticulum at domains of new tubule growth (PubMed:23263280).



Western Blot - Anti-Rab10 Rabbit mAb [17M75L49]

All lanes: R012942 at 1:1,000 dilution

Lane 1 : HCT116 (Human colorectal carcinoma epithelial cell) whole cell lysates

Lane 2 : HepG2 (Human hepatocellular carcinoma epithelial cell) whole cell lysates

Lane 3 : SW620 (Human colorectal carcinoma epithelial cell) whole cell lysates

Lane 4 : Caco-2 (Human colorectal adenocarcinoma cell) whole cell lysates

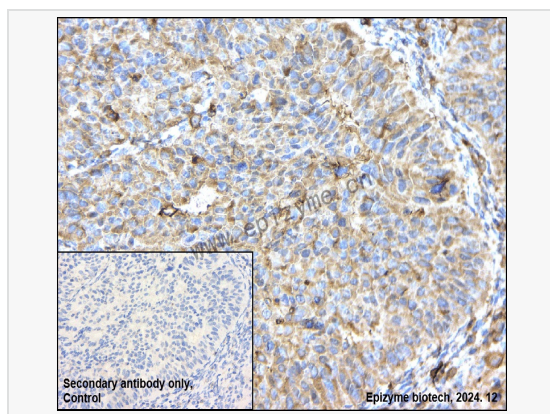
Lysates/proteins at 10 µg per lane.

Secondary antibody: Goat Anti-Rabbit IgG(H+L), HRP Conjugated (Cat. No. LF102) at 1:5,000 dilution

Predicted band size: 23 kDa

Observed band size: 23 kDa

Developed using the ECL technique (Cat. No. SQ201).



Immunohistochemistry - Anti-Rab10 Rabbit mAb [17M75L49]

Sample: Paraformaldehyde-fixed, paraffin embedded human endometrial carcinoma tissue

Heat mediated antigen retrieval with Tris-EDTA buffer (pH 9.0) for 30 mins.

Primary antibody: R012942 at 1:200 dilution

Secondary antibody: Goat Anti-Rabbit IgG (H+L), HRP conjugated at 1:1,000 dilution

DAB was used as the chromogen.

Counter stained with hematoxylin.

Positive/negative staining were presented.

Only the secondary antibody was used as the negative control.