

## Anti-PCPTP1 Rabbit mAb

Purified Recombinant Rabbit Monoclonal Antibody

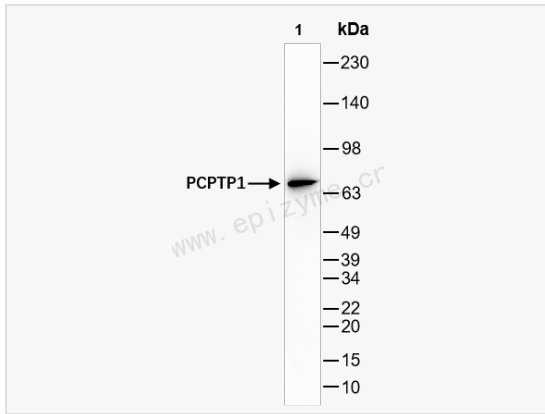
Catalog # R012840

### Product Information

Application	WB, ELISA
Reactivity	Mouse, Rat
Dilution	WB 1:1,000~1:2,000
Host	Rabbit
Clonality	Monoclonal
Clone No.	13M73L21
Isotype	IgG
Label	Unconjugated
Immunogen	A synthesized peptide derived from human PCPTP1
Format	Affinity purified monoclonal antibody supplied in PBS with 0.02% sodium azide and 50% glycerol, pH 7.3.
Storage	Shipped on wet ice. Store at -20°C. Stable for 24 months from date of receipt. Aliquoting is unnecessary for -20°C storage.
Precautions	Anti-PCPTP1 Rabbit mAb [13M73L21] is for research use only and not for use in diagnostic or therapeutic procedures.

### Protein Information

Synonyms	ECPTP; PTPRQ; PTPRR; Receptor-type tyrosine-protein phosphatase R; R-PTP-R; Ch-1PTPase; NC-PTPCOM1; Protein-tyrosine phosphatase PCPTP1.
Calculated MW	Calculated MW: 74 kDa; Observed MW: 74 kDa
Uniprot ID	Q15256
Gene ID	5801
Background	The protein encoded by this gene is a member of the protein tyrosine phosphatase (PTP) family. PTPs are known to be signaling molecules that regulate a variety of cellular processes including cell growth, differentiation, mitotic cycle, and oncogenic transformation. This PTP possesses an extracellular region, a single transmembrane region, and a single intracellular catalytic domain, and thus represents a receptor-type PTP. Silencing of this gene has been associated with colorectal cancer. Multiple transcript variants encoding different isoforms have been found for this gene. This gene shares a symbol (PTPRQ) with another gene, protein tyrosine phosphatase, receptor type, Q (GeneID 374462), which is also located on chromosome 12. [provided by RefSeq, May 2011]
Cellular Location	Secreted.Isoform Alpha.Cell membrane.Single-pass type I membrane protein.Isoform Delta.Cytoplasm.Perinuclear region.Locates to the perinuclear areas within the cytoplasm.Isoform Gamma.Cytoplasm.Perinuclear region.Locates to the perinuclear areas within the cytoplasm.
Tissue Location	Detected in cerebrospinal fluid (at protein level) (PubMed:25326458). Expressed in brain, placenta, small intestine, stomach, uterus and weakly in the prostate. Isoform alpha has been observed only in the brain. Isoform gamma is expressed in brain,



Western Blot - Anti-PCPTP1 Rabbit mAb [13M73L21]

All lanes: R012840 at 1:1,000 dilution

Lane 1: Rat brain whole tissue lysates

Lysates/proteins at 10  $\mu$ g per lane.

Secondary antibody: Goat Anti-Rabbit IgG (H+L), HRP Conjugated (Cat. No. LF102) at 1:5,000 dilution

Predicted band size: 74 kDa

Observed band size: 74 kDa

Developed using the ECL technique (Cat. No. SQ201).