

Anti-p53 Rabbit mAb

Purified Rabbit Monoclonal Antibody

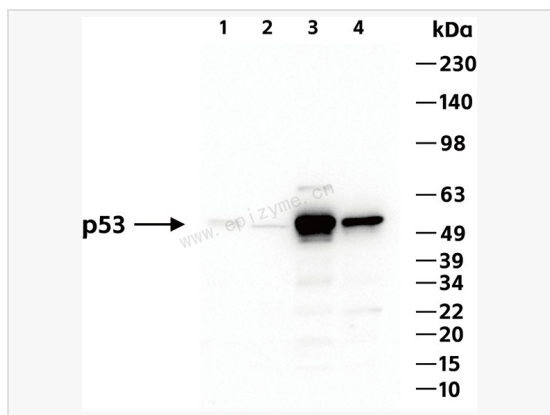
Catalog # R012089

Product Information

Application	WB, ICC/IF (Cell), IP, ELISA
Reactivity	Mouse
Dilution	WB 1:500~1:1,000; IF 1:50~1:200; IP 1:20
Host	Rabbit
Clonality	Monoclonal
Clone No.	76K75K75
Isotype	IgG
Label	Unconjugated
Immunogen	Recombinant protein of mouse p53
Format	Buffer System: 50mM Tris-Glycine(pH 7.4), 0.15M NaCl, 40% Glycerol, 0.01% Sodium azide and 0.05% BSA Purification: Affinity Purified.
Storage	Shipped on wet ice. Store at -20°C. Stable for 24 months from date of receipt. Aliquoting is unnecessary for -20°C storage.
Precautions	Anti-p53 antibody [76K75K75] is for research use only and not for use in diagnostic or therapeutic procedures.

Protein Information

Synonyms	bb1, bfy, bhy, p44, p53, Tp53.
Calculated MW	Calculated MW: 43 kDa; Observed MW: 53 kDa
Uniprot ID	P02340
Gene ID	22059
Background	Acts as a tumor suppressor in many tumor types; induces growth arrest or apoptosis depending on the physiological circumstances and cell type. Involved in cell cycle regulation as a trans-activator that acts to negatively regulate cell division by controlling a set of genes required for this process. One of the activated genes is an inhibitor of cyclin-dependent kinases.



Western Blot - Anti-p53 Rabbit mAb [76K75K75]

All lanes: R012089 at 1:1,000 dilution

Lane 1: HepG2 (Human hepatocarcinoma epithelial cell) whole cell lysates

Lane 2: HCT116 (Human colorectal carcinoma epithelial cell) whole cell lysates

Lane 3: 293T (Human embryonic kidney cell) whole cell lysates

Lane 4: A431 (Human epidermoid teratoma cell line) whole cell lysates

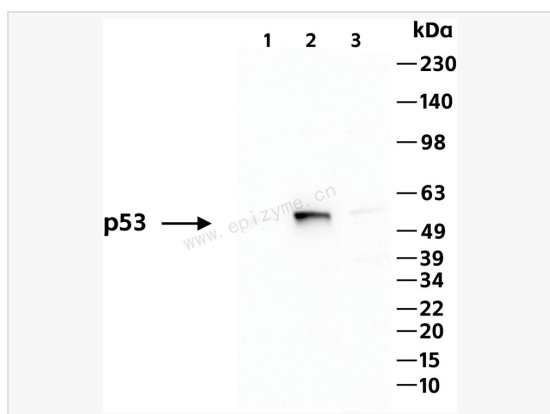
Lysates/proteins at 10 µg per lane.

Secondary antibody: Goat Anti-Rabbit IgG(H+L), HRP Conjugated (Cat. No. LF102) at 1:5,000 dilution

Predicted band size: 53 kDa

Observed band size: 53 kDa

Developed using the ECL technique (Cat. No. SQ201).



Western Blot - Anti-p53 Rabbit mAb [76K75K75]

All lanes: R012089 at 1:1,000 dilution

Lane 1: THP-1 (Human monocytic leukemia cell) whole cell lysates

Lane 2: Raw264.7 (Mouse mononuclear macrophage leukemia cell) whole cell lysates

Lane 3: PC-12 (Rat adrenal pheochromocytoma epithelial cell) whole cell lysates

Lysates/proteins at 10 µg per lane.

Secondary antibody: Goat Anti-Rabbit IgG(H+L), HRP Conjugated (Cat. No. LF102) at 1:5,000 dilution

Predicted band size: 53 kDa

Observed band size: 53 kDa

Developed using the ECL technique (Cat. No. SQ201).