

## Anti-NXF1 Rabbit mAb

Purified Rabbit Monoclonal Antibody

Catalog # R012451

### Product Information

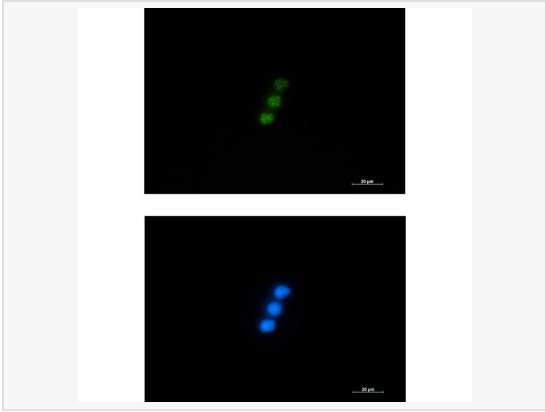
Application	WB, IHC-F/IF (Tissue-F), IHC-P/IF (Tissue-P), ICC/IF (Cell), IP, ELISA
Reactivity	Human
Dilution	WB 1:500~1:1,000; IHC-P 1:50~1:100; IF 1:50~1:200; IP 1:20
Host	Rabbit
Clonality	Monoclonal
Clone No.	59L33M05
Isotype	IgG
Label	Unconjugated
Immunogen	A synthetic peptide of human NXF1
Format	Buffer System: 50mM Tris-Glycine(pH 7.4), 0.15M NaCl, 40% Glycerol, 0.01% Sodium azide and 0.05% BSA Purification: Affinity Purified.
Storage	Shipped on wet ice. Store at -20°C. Stable for 24 months from date of receipt. Aliquoting is unnecessary for -20°C storage.
Precautions	Anti-NXF1 antibody [59L33M05] is for research use only and not for use in diagnostic or therapeutic procedures.

### Protein Information

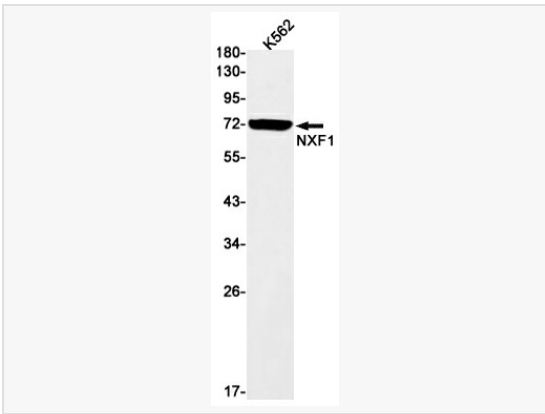
Synonyms	DmNXF1, MEX67, Mex67p, Mvb1, NXF1, Sbr, TAP.
Calculated MW	Calculated MW: 70 kDa; Observed MW: 70 kDa
Uniprot ID	Q9UBU9
Gene ID	10482
Background	Involved in the nuclear export of mRNA species bearing retroviral constitutive transport elements (CTE) and in the export of mRNA from the nucleus to the cytoplasm. The NXF1-NXT1 heterodimer is involved in the export of HSP70 mRNA in conjunction with THOC4 and THOC5.

## Validation Images

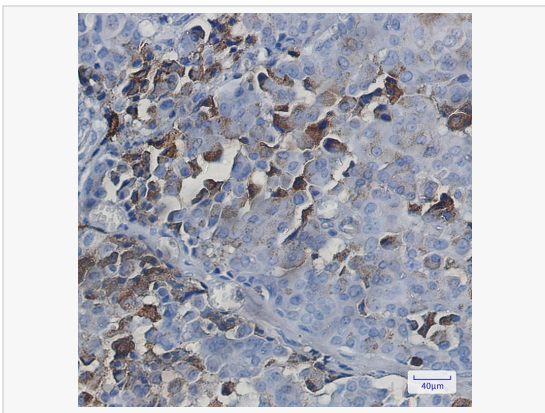
---



Immunocytochemistry analysis of NXF1 (green) in Jurkat using NXF1 antibody and DAPI (blue) .



Western blot analysis of NXF1 in K562 lysates using NXF1 antibody.



Immunohistochemistry analysis of paraffin-embedded Human breast cancer tissue using NXF1 antibody. High-pressure and temperature Sodium Citrate pH 6.0 was used for antigen retrieval.