

# Anti-NF- $\kappa$ B p100 Rabbit mAb

Purified Rabbit Monoclonal Antibody

Catalog # R010511

## Product Information

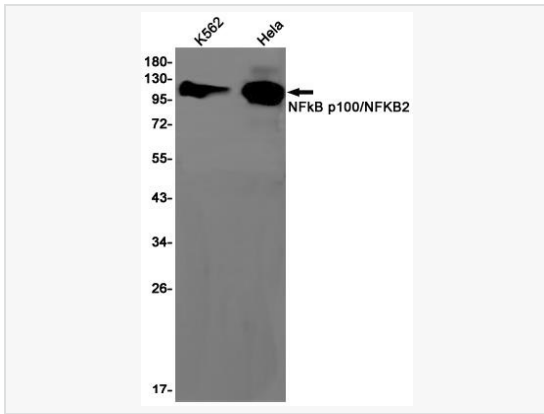
Application	WB, ICC/IF (Cell), IP, ELISA
Reactivity	Human, Mouse
Dilution	WB 1:500~1:1,000; IF 1:50~1:200; IP 1:20
Host	Rabbit
Clonality	Monoclonal
Clone No.	98L22L08
Isotype	IgG
Label	Unconjugated
Immunogen	A synthetic peptide of human NF $\kappa$ B p100/NFKB2
Format	Buffer System: 50mM Tris-Glycine(pH 7.4), 0.15M NaCl, 40% Glycerol, 0.01% Sodium azide and 0.05% BSA Purification: Affinity Purified.
Storage	Shipped on wet ice. Store at -20°C. Stable for 24 months from date of receipt. Aliquoting is unnecessary for -20°C storage.
Precautions	Anti-NF- $\kappa$ B p100 antibody [98L22L08] is for research use only and not for use in diagnostic or therapeutic procedures.

## Protein Information

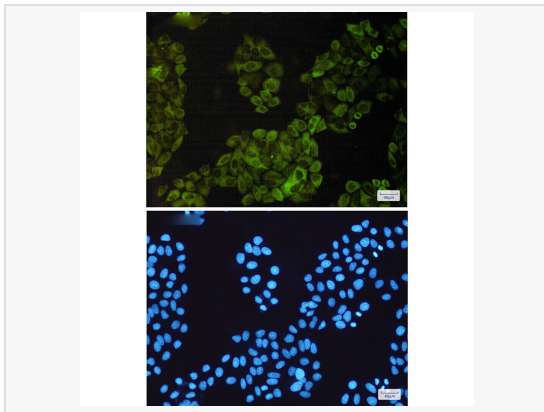
Synonyms	NFKB2, LYT10, Nuclear factor NF- $\kappa$ B p100 subunit, DNA-binding factor KBF2, H2TF1, Lymphocyte translocation chromosome 10 protein, Nuclear factor of kappa light polypeptide gene enhancer in B-cells 2, Oncogene Lyt-10, Lyt10.
Calculated MW	Calculated MW: 97 kDa; Observed MW: 120 kDa
Uniprot ID	Q00653
Gene ID	4791
Background	Transcription factors of the nuclear factor $\kappa$ B (NF- $\kappa$ B)/Rel family play a pivotal role in inflammatory and immune responses. NF- $\kappa$ B-activating agents can induce the phosphorylation of I $\kappa$ B proteins, targeting them for rapid degradation through the ubiquitin-proteasome pathway and releasing NF- $\kappa$ B to enter the nucleus where it regulates gene expression.

## Validation Images

---



Western blot analysis of NF-κB p100/NF-κB2 in K562, HeLa lysates using NF-κB p100 antibody.



Immunocytochemistry analysis of NF-κB p100/NF-κB2 (green) in HeLa using NF-κB p100/NF-κB2 antibody and DAPI (blue)