

## Anti-MAT1A Rabbit mAb

Purified Recombinant Rabbit Monoclonal Antibody

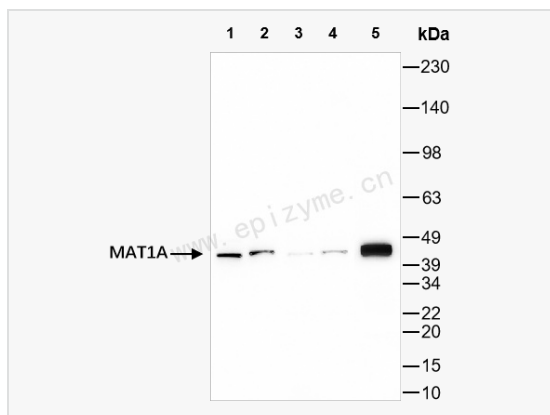
Catalog # R011299

### Product Information

Application	WB, ELISA
Reactivity	Human, Mouse
Dilution	WB 1:1,000~1:3,000
Host	Rabbit
Clonality	Monoclonal
Clone No.	66K94L89
Isotype	IgG
Label	Unconjugated
Immunogen	A synthesized peptide derived from human MAT1A
Format	Affinity purified monoclonal antibody supplied in PBS with 0.02% sodium azide and 50% glycerol, pH 7.3.
Storage	Shipped on wet ice. Store at -20°C. Stable for 24 months from date of receipt. Aliquoting is unnecessary for -20°C storage.
Precautions	Anti-MAT1A Rabbit mAb [66K94L89] is for research use only and not for use in diagnostic or therapeutic procedures.

### Protein Information

Synonyms	AMS1; MATA1; MAT1A; S-adenosylmethionine synthase isoform type-1; AdoMet synthase 1; Methionine adenosyltransferase 1; Methionine adenosyltransferase I/III; MAT 1; MAT-I/III.
Calculated MW	Calculated MW: 44 kDa; Observed MW: 44 kDa
Uniprot ID	Q00266
Gene ID	4143
Background	This gene catalyzes a two-step reaction that involves the transfer of the adenosyl moiety of ATP to methionine to form S-adenosylmethionine and triphosphosphate, which is subsequently cleaved to PPi and Pi. S-adenosylmethionine is the source of methyl groups for most biological methylations. The encoded protein is found as a homotetramer (MAT I) or a homodimer (MAT III) whereas a third form, MAT II (gamma), is encoded by the MAT2A gene. Mutations in this gene are associated with methionine adenosyltransferase deficiency. [provided by RefSeq, Jul 2008]
Tissue Location	Expressed in liver.



Western Blot - Anti-MAT1A Rabbit mAb [66K94L89]

All lanes: R011299 at 1:3,000 dilution

Lane 1: HepG2 (Human hepatocarcinoma epithelial cell) whole cell lysates

Lane 2: HCT116 (Human colorectal carcinoma epithelial cell) whole cell lysates

Lane 3: K562 (Human chronic myeloid leukemia cell) whole cell lysates

Lane 4: U87 (Human malignant glioblastoma epithelial cell) whole cell lysates

Lane 5: Mouse liver whole tissue lysates

Lysates/proteins at 10  $\mu$ g per lane.

Secondary antibody: Goat Anti-Rabbit IgG (H+L), HRP Conjugated (Cat. No. LF102) at 1:5,000 dilution

Predicted band size: 44 kDa

Observed band size: 44 kDa

Developed using the ECL technique (Cat. No. SQ201).