

Anti-HMGCL Rabbit mAb

Purified Recombinant Rabbit Monoclonal Antibody

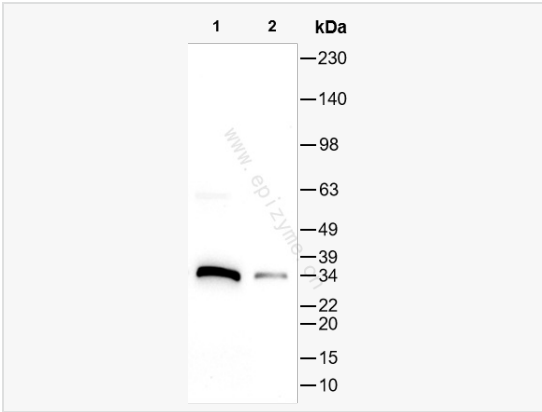
Catalog # R011325

Product Information

Application	WB, IHC-P/IF (Tissue-P), ELISA
Reactivity	Human
Dilution	WB 1:1,000~1:2,000; IHC-P 1:100~1:200; IF 1:100~1:200
Host	Rabbit
Clonality	Monoclonal
Clone No.	98M42L14
Isotype	IgG
Label	Unconjugated
Immunogen	A synthesized peptide derived from human HMGCL
Format	Affinity purified monoclonal antibody supplied in PBS with 0.02% sodium azide and 50% glycerol, pH 7.3.
Storage	Shipped on wet ice. Store at -20°C. Stable for 24 months from date of receipt. Aliquoting is unnecessary for -20°C storage.
Precautions	Anti-HMGCL Rabbit mAb [98M42L14] is for research use only and not for use in diagnostic or therapeutic procedures.

Protein Information

Synonyms	HL; HMGCL1; HMGCL_HUMAN; HMGCL; HMG-CoA lyase; 3-hydroxy-3-methylglutarate-CoA lyase; 4.1.3.4; HMGCL_MOUSE; HMGCL_RAT.
Calculated MW	Calculated MW: 34 kDa; Observed MW: 34 kDa
Uniprot ID	P35914
Gene ID	3155
Background	The protein encoded by this gene belongs to the HMG-CoA lyase family. It is a mitochondrial enzyme that catalyzes the final step of leucine degradation and plays a key role in ketone body formation. Mutations in this gene are associated with HMG-CoA lyase deficiency. Alternatively spliced transcript variants encoding different isoforms have been found for this gene. [provided by RefSeq, Oct 2009]
Cellular Location	Mitochondrion matrix Peroxisome Unprocessed form is peroxisomal.
Tissue Location	Highest expression in liver. Expressed in pancreas, kidney, intestine, testis, fibroblasts and lymphoblasts. Very low expression in brain and skeletal muscle. The relative expression of isoform 2 (at mRNA level) is highest in heart (30%), skeletal muscle (22%), and brain (14%).



Western Blot - Anti-HMGCL Rabbit mAb [98M42L14]

All lanes: R011325 at 1:1,000 dilution

Lane 1: HepG2 (Human hepatocarcinoma epithelial cell) whole cell lysates

Lane 2: U87 (Human malignant glioblastoma epithelial cells) whole cell lysates

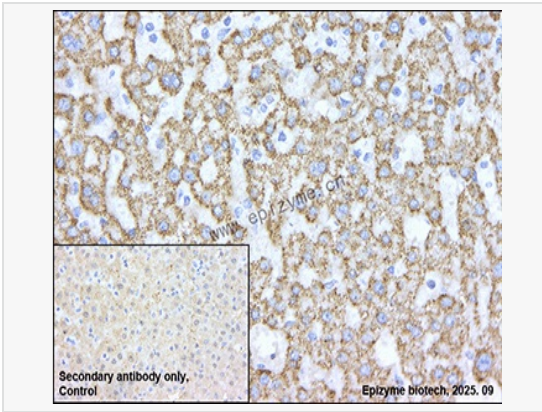
Lysates/proteins at 10 µg per lane.

Secondary antibody: Goat Anti-Rabbit IgG (H+L), HRP Conjugated (Cat. No. LF102) at 1:5,000 dilution

Predicted band size: 34 kDa

Observed band size: 34 kDa

Developed using the ECL technique (Cat. No. SQ201).



Immunohistochemistry - Anti-HMGCL Rabbit mAb [98M42L14]

Sample: Paraformaldehyde-fixed, paraffin embedded human hepatoma tissue

Heat mediated antigen retrieval with Tris-EDTA buffer (pH 9.0) for 30 mins.

Primary antibody: R011325 at 1:200 dilution

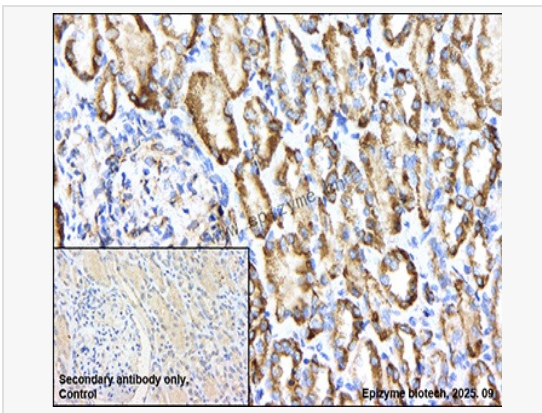
Secondary antibody: Goat Anti-Rabbit IgG (H+L), HRP conjugated at 1:1,000 dilution

DAB was used as the chromogen.

Counter stained with hematoxylin.

Positive/negative staining were presented.

Only the secondary antibody was used as the negative control.



Immunohistochemistry - Anti-HMGCL Rabbit mAb [98M42L14]

Sample: Paraformaldehyde-fixed, paraffin embedded human renal carcinoma tissue

Heat mediated antigen retrieval with Tris-EDTA buffer (pH 9.0) for 30 mins.

Primary antibody: R011325 at 1:200 dilution

Secondary antibody: Goat Anti-Rabbit IgG (H+L), HRP conjugated at 1:1,000 dilution

DAB was used as the chromogen.

Counter stained with hematoxylin.

Positive/negative staining were presented.

Only the secondary antibody was used as the negative control.