

Anti-GPCR LGR6 Rabbit mAb

Purified Recombinant Rabbit Monoclonal Antibody

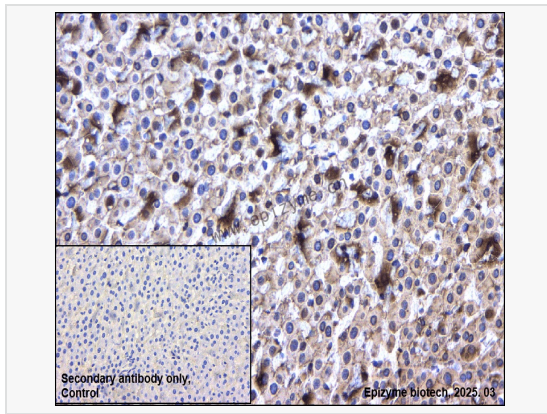
Catalog # R013010

Product Information

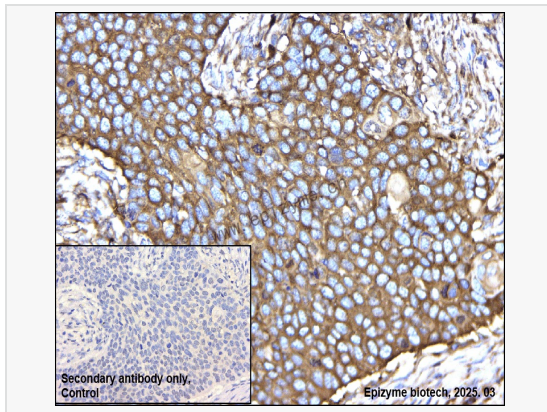
Application	WB, IHC-P/IF (Tissue-P), IF (Cell)/ICC, ELISA
Reactivity	Human, Mouse, Rat
Dilution	WB 1:1,000~1:2,000; IHC-P 1:100~1:200; IF 1:100~1:200
Host	Rabbit
Clonality	Monoclonal
Clone No.	64K62M94
Isotype	IgG
Label	Unconjugated
Immunogen	A synthesized peptide derived from human GPCR LGR6
Format	Affinity purified monoclonal antibody supplied in PBS with 0.01% sodium azide and 50% glycerol, pH 7.3.
Storage	Shipped on wet ice. Store at -20°C. Stable for 24 months from date of receipt. Aliquoting is unnecessary for -20°C storage.
Precautions	Anti-GPCR LGR6 Rabbit mAb [64K62M94] is for research use only and not for use in diagnostic or therapeutic procedures.

Protein Information

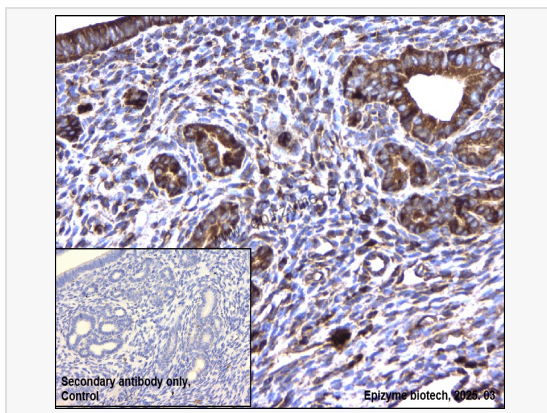
Synonyms	FLJ14471; Gonadotropin receptor; GPCR; Leucine rich repeat containing G protein coupled receptor 6; Leucine-rich repeat-containing G-protein coupled receptor 6; Lgr6; LGR6_HUMAN; VTS20631; GPCR LGR6.
Calculated MW	Calculated MW: 104 kDa; Observed MW: 104 kDa
Uniprot ID	Q9HBX8
Gene ID	59352
Background	This gene encodes a member of the leucine-rich repeat-containing subgroup of the G protein-coupled 7-transmembrane protein superfamily. The encoded protein is a glycoprotein hormone receptor with a large N-terminal extracellular domain that contains leucine-rich repeats important for the formation of a horseshoe-shaped interaction motif for ligand binding. Alternative splicing of this gene results in multiple transcript variants. [provided by RefSeq, Jul 2008]
Cellular Location	Cell membrane.



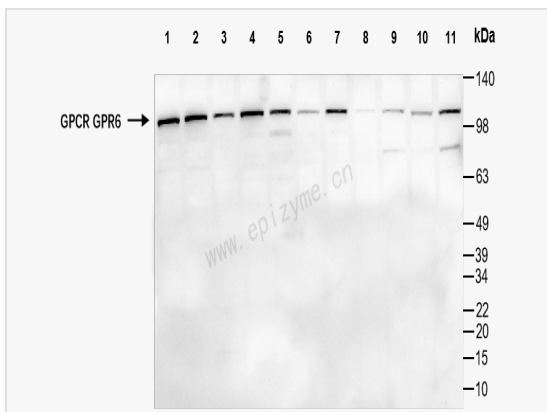
Immunohistochemistry - Anti-GPCR LGR6 Rabbit mAb [64K62M94]
 Sample: Paraformaldehyde-fixed, paraffin embedded rat liver tissue
 Heat mediated antigen retrieval with Tris-EDTA buffer (pH 9.0) for 30 mins.
 Primary antibody: R013010 at 1:200 dilution
 Secondary antibody: Goat Anti-Rabbit IgG (H+L), HRP conjugated at 1:1,000 dilution
 DAB was used as the chromogen.
 Counter stained with hematoxylin.
 Positive/negative staining were presented.
 Only the secondary antibody was used as the negative control.



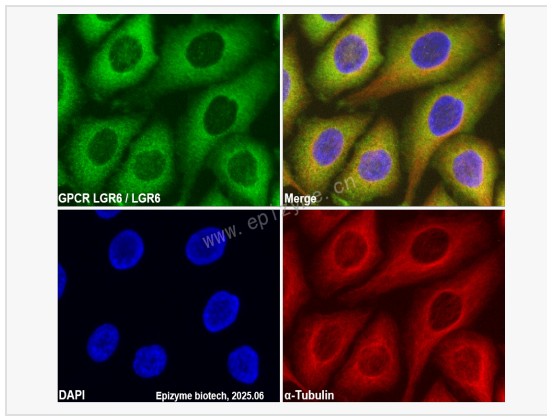
Immunohistochemistry - Anti-GPCR LGR6 Rabbit mAb [64K62M94]
 Sample: Paraformaldehyde-fixed, paraffin embedded human lung cancer tissue
 Heat mediated antigen retrieval with Tris-EDTA buffer (pH 9.0) for 30 mins.
 Primary antibody: R013010 at 1:200 dilution
 Secondary antibody: Goat Anti-Rabbit IgG (H+L), HRP conjugated at 1:1,000 dilution
 DAB was used as the chromogen.
 Counter stained with hematoxylin.
 Positive/negative staining were presented.
 Only the secondary antibody was used as the negative control.



Immunohistochemistry - Anti-GPCR LGR6 Rabbit mAb [64K62M94]
 Sample: Paraformaldehyde-fixed, paraffin embedded mouse ovary tissue
 Heat mediated antigen retrieval with Tris-EDTA buffer (pH 9.0) for 30 mins.
 Primary antibody: R013010 at 1:200 dilution
 Secondary antibody: Goat Anti-Rabbit IgG (H+L), HRP conjugated at 1:1,000 dilution
 DAB was used as the chromogen.
 Counter stained with hematoxylin.
 Positive/negative staining were presented.
 Only the secondary antibody was used as the negative control.



Western Blot - Anti-GPCR LGR6 Rabbit mAb [64K62M94]
 All lanes: R013010 at 1:2,000 dilution
 Lane 1: HeLa (Human cervix adenocarcinoma epithelial cell) whole cell lysates
 Lane 2: HepG2 (Human hepatocarcinoma epithelial cell) whole cell lysates
 Lane 3: T24 (Human bladder cancer epithelial cell) whole cell lysates
 Lane 4: HCT116 (Human colorectal carcinoma epithelial cell) whole cell lysates
 Lane 5: Caco2 (Human colorectal adenocarcinoma epithelial cell) whole cell lysates
 Lane 6: SH-SY5Y (Human neuroblastoma epithelial cell) whole cell lysates
 Lane 7: 293T (Human embryonic kidney cell) whole cell lysates
 Lane 8: SCC-9 (Human tongue squamous carcinoma epithelial cell) whole cell lysates
 Lane 9: C2C12 (Mouse myoblasts epithelial cell) whole cell lysates
 Lane 10: Raw264.7 (Mouse mononuclear macrophage leukemia cell) whole cell lysates
 Lane 11: PC-12 (Rat adrenal pheochromocytoma epithelial cell) whole cell lysates
 Lysates/proteins at 10 µg per lane.
 Secondary antibody: Goat Anti-Rabbit IgG (H+L), HRP Conjugated (Cat. No. LF102) at 1:5,000 dilution
 Predicted band size: 104 kDa
 Observed band size: 104 kDa
 Developed using the ECL technique (Cat. No. SQ201).



Immunofluorescence - Anti-GPCR LGR6 Rabbit mAb [64K62M94]

Sample: HeLa cells

The cells were fixed with 4% paraformaldehyde (10 min), permeabilized with 0.5% Triton X-100 for 10 minutes and then blocked with 5% BSA in 0.1% PBS-Tween for 0.5 hours.

Primary antibodies: R013010 at 1:100 dilution and α -tubulin Mouse Monoclonal Antibody (Cat. No. LF209) at 1:100 dilution

Secondary antibodies: Goat anti-Rabbit (488) at 1:1,000 dilution (shown in green) and Goat anti-Mouse (555) at 1:1,000 dilution (shown in red)

Nuclei were stained with DAPI (shown in blue).