

# Anti-Glutathione Synthetase Rabbit mAb

Purified Recombinant Rabbit Monoclonal Antibody

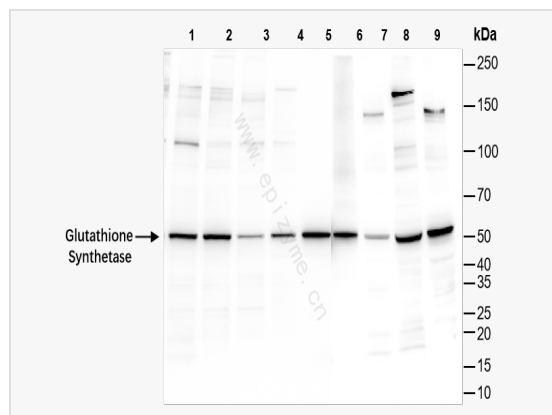
Catalog # R012110

## Product Information

Application	WB, ELISA
Reactivity	Mouse, Rat, Human
Dilution	WB 1:1,000~1:2,000
Host	Rabbit
Clonality	Monoclonal
Clone No.	15L92M58
Isotype	IgG
Label	Unconjugated
Immunogen	A synthesized peptide derived from human Glutathione Synthetase
Format	Affinity purified monoclonal antibody supplied in PBS with 0.01% sodium azide and 50% glycerol, pH 7.3.
Storage	Shipped on wet ice. Store at -20°C. Stable for 24 months from date of receipt. Aliquoting is unnecessary for -20°C storage.
Precautions	Anti-Glutathione Synthetase Rabbit mAb [15L92M58] is for research use only and not for use in diagnostic or therapeutic procedures.

## Protein Information

Synonyms	epididymis secretory sperm binding protein Li 64p, epididymis secretory sperm binding protein Li 88n, Glutathione synthase, Glutathione synthetase, GSH S, GSH synthetase, GSH-S, GSHB_HUMAN, GSHS, GSS, HEL-S-64p, HEL-S-88n, MGC14098, OTTHUMP00000030711.
Calculated MW	Calculated MW: 52 kDa; Observed MW: 52 kDa
Uniprot ID	P48637
Gene ID	2937
Background	Glutathione is important for a variety of biological functions, including protection of cells from oxidative damage by free radicals, detoxification of xenobiotics, and membrane transport. The protein encoded by this gene functions as a homodimer to catalyze the second step of glutathione biosynthesis, which is the ATP-dependent conversion of gamma-L-glutamyl-L-cysteine to glutathione. Defects in this gene are a cause of glutathione synthetase deficiency. [provided by RefSeq, Jul 2008]



Western Blot - Anti-Glutathione Synthetase Rabbit mAb [15L92M58]

All lanes: R012110 at 1:2,000 dilution

Lane 1: HeLa (Human cervix adenocarcinoma epithelial cell) whole cell lysates

Lane 2: HepG2 (Human hepatocarcinoma epithelial cell) whole cell lysates

Lane 3: HCT116 (Human colorectal carcinoma epithelial cell) whole cell lysates

Lane 4: A431 (Human epidermoid teratoma cell line) whole cell lysates

Lane 5: T24 (Human bladder cancer epithelial cell) whole cell lysates

Lane 6: Rat small intestine whole tissue lysates

Lane 7: Rat spleen whole tissue lysates

Lane 8: Mouse heart whole tissue lysates

Lane 9: Mouse brain whole tissue lysates

Lysates/proteins at 10 µg per lane.

Secondary antibody: Goat Anti-Rabbit IgG(H+L), HRP Conjugated (Cat. No. LF102) at 1:5,000 dilution

Predicted band size: 52 kDa

Observed band size: 52 kDa

Developed using the ECL technique (Cat. No. SQ201).