

Anti-D4 GDI Rabbit mAb

Purified Recombinant Rabbit Monoclonal Antibody

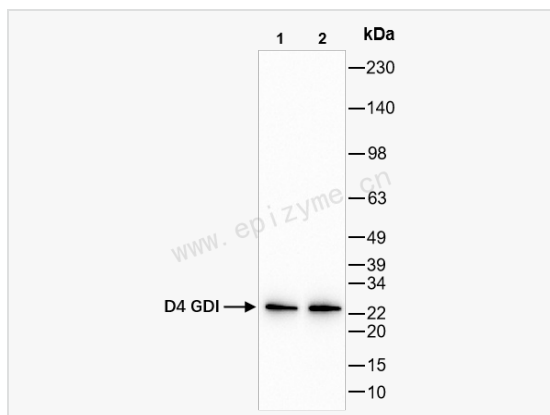
Catalog # R010519

Product Information

Application	WB, IHC-P/IF (Tissue-P), ELISA
Reactivity	Human, Mouse
Dilution	WB 1:1,000~1:2,000; IHC-P 1:100~1:200; IF 1:100~1:200
Host	Rabbit
Clonality	Monoclonal
Clone No.	65M94L61
Isotype	IgG
Label	Unconjugated
Immunogen	A synthesized peptide derived from human D4 GDI
Format	Affinity purified monoclonal antibody supplied in PBS with 0.02% sodium azide and 50% glycerol, pH 7.3.
Storage	Shipped on wet ice. Store at -20°C. Stable for 24 months from date of receipt. Aliquoting is unnecessary for -20°C storage.
Precautions	Anti-D4 GDI Rabbit mAb [65M94L61] is for research use only and not for use in diagnostic or therapeutic procedures.

Protein Information

Synonyms	D4 GDI ARHGDIB; D4 GDI; D4 antibody D4 GDP dissociation inhibitor; RAP1GN1; GDIA 2; GDIA2; GDID 4; GDID4; GDIR2_HUMAN; GDP dissociation inhibitor D4; LY GDI; Ly-GDI; LYGDI; MGC108926; RAP1GN1; Rho GDI 2; Rho GDI beta; Rho GDI2; Rho GDP dissociation inhibitor(GDI) beta; Rho GDP dissociation inhibitor 2; Rho GDP dissociation inhibitor beta; Rho GDP-dissociation inhibitor 2; Rho-GDI beta; RhoGDI2.
Calculated MW	Calculated MW: 23 kDa; Observed MW: 23 kDa
Uniprot ID	P52566
Gene ID	397
Background	Members of the Rho (or ARH) protein family (see MIM 165390) and other Ras-related small GTP-binding proteins (see MIM 179520) are involved in diverse cellular events, including cell signaling, proliferation, cytoskeletal organization, and secretion. The GTP-binding proteins are active only in the GTP-bound state. At least 3 classes of proteins tightly regulate cycling between the GTP-bound and GDP-bound states: GTPase-activating proteins (GAPs), guanine nucleotide-releasing factors (GRFs), and GDP-dissociation inhibitors (GDIs). The GDIs, including ARHGDIB, decrease the rate of GDP dissociation from Ras-like GTPases (summary by Scherle et al., 1993 [PubMed 8356058]).[supplied by OMIM, Dec 2010]
Cellular Location	Cytoplasm Cytosol
Tissue Location	Detected in bone marrow, thymus and spleen.



Western Blot - Anti-D4 GDI Rabbit mAb [65M94L61]

All lanes: R010519 at 1:1,000 dilution

Lane 1: Ball-1 (Human B lymphocyte acute leukemia cell) whole cell lysates

Lane 2: Raw264.7 (Mouse mononuclear macrophage leukemia cell) whole cell lysates

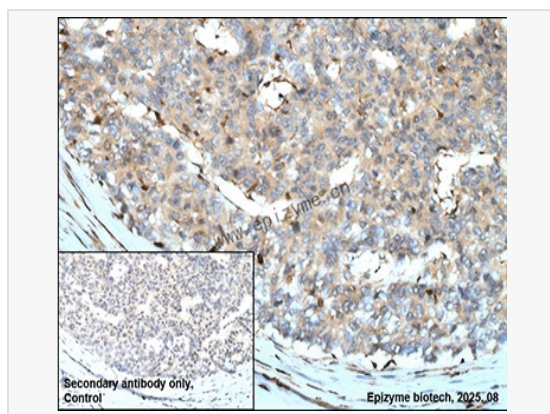
Lysates/proteins at 10 µg per lane.

Secondary antibody: Goat Anti-Rabbit IgG (H+L), HRP Conjugated (Cat. No. LF102) at 1:5,000 dilution

Predicted band size: 23 kDa

Observed band size: 23 kDa

Developed using the ECL technique (Cat. No. SQ201).



Immunohistochemistry - Anti-D4 GDI Rabbit mAb [65M94L61]

Sample: Paraformaldehyde-fixed, paraffin embedded human hepatoma tissue

Heat mediated antigen retrieval with Tris-EDTA buffer (pH 9.0) for 30 mins.

Primary antibody: R010519 at 1:200 dilution

Secondary antibody: Goat Anti-Rabbit IgG (H+L), HRP conjugated at 1:1,000 dilution

DAB was used as the chromogen.

Counter stained with hematoxylin.

Positive/negative staining were presented.

Only the secondary antibody was used as the negative control.