

Anti-Cyclophilin B Rabbit mAb

Purified Recombinant Rabbit Monoclonal Antibody

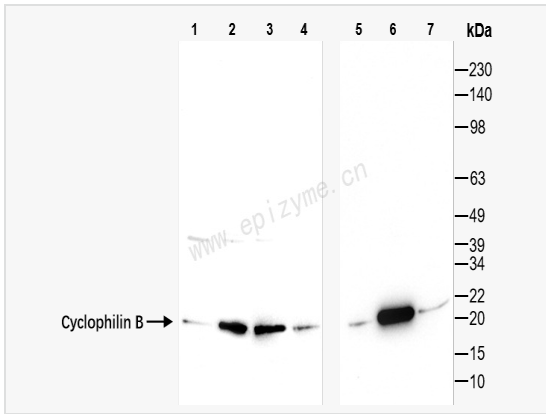
Catalog # R010406

Product Information

Application	WB, IHC-P/IF (Tissue-P), ELISA
Reactivity	Human, Mouse, Rat
Dilution	WB 1:1,000~1:2,000; IHC-P 1:100~1:200; IF 1:100~1:200
Host	Rabbit
Clonality	Monoclonal
Clone No.	46M55K99
Isotype	IgG
Label	Unconjugated
Immunogen	A synthesized peptide derived from human Cyclophilin B
Format	Affinity purified monoclonal antibody supplied in PBS with 0.02% sodium azide and 50% glycerol, pH 7.3.
Storage	Shipped on wet ice. Store at -20°C. Stable for 24 months from date of receipt. Aliquoting is unnecessary for -20°C storage.
Precautions	Anti-Cyclophilin B Rabbit mAb [46M55K99] is for research use only and not for use in diagnostic or therapeutic procedures.

Protein Information

Synonyms	AA408962; AA553318; AI844835; Cphn 2; Cphn2; Cyclophilin B; Cyclophilin like protein; CyP 20b; CYP S1; CYP-S1; CYPB; EC 5.2.1.8; MGC14109; MGC2224; OI9; peptidyl prolyl cis trans isomerase B; Peptidyl prolyl cis trans isomerase B precursor; Peptidyl-prolyl cis-trans isomerase B; peptidylprolyl isomerase B (cyclophilin B); Peptidylprolyl isomerase B; PPIase; PPIase B; Ppib; PPIB_HUMAN; Rotamase; Rotamase B; S cyclophilin; S-cyclophilin; SCYLP.
Calculated MW	Calculated MW: 24 kDa; Observed MW: 20 kDa
Uniprot ID	P23284
Gene ID	5479
Background	The protein encoded by this gene is a cyclosporine-binding protein and is mainly located within the endoplasmic reticulum. It is associated with the secretory pathway and released in biological fluids. This protein can bind to cells derived from T- and B-lymphocytes, and may regulate cyclosporine A-mediated immunosuppression. Variants have been identified in this protein that give rise to recessive forms of osteogenesis imperfecta. [provided by RefSeq, Oct 2009]
Cellular Location	Endoplasmic reticulum lumen. Melanosome. Identified by mass spectrometry in melanosome fractions from stage I to stage IV.



Western Blot - Anti-Cyclophilin B Rabbit mAb [46M55K99]

All lanes: R010406 at 1:2,000 dilution

Lane 1: HeLa (Human cervix adenocarcinoma epithelial cell) whole cell lysates

Lane 2: HepG2 (Human hepatocarcinoma epithelial cell) whole cell lysates

Lane 3: SH-SY5Y (Human neuroblastoma epithelial cell) whole cell lysates

Lane 4: C2C12 (Mouse myoblasts epithelial cell) whole cell lysates

Lane 5: Mouse liver whole tissue lysates

Lane 6: PC-12 (Rat adrenal pheochromocytoma epithelial cell) whole cell lysates

Lane 7: Rat brain whole tissue lysates

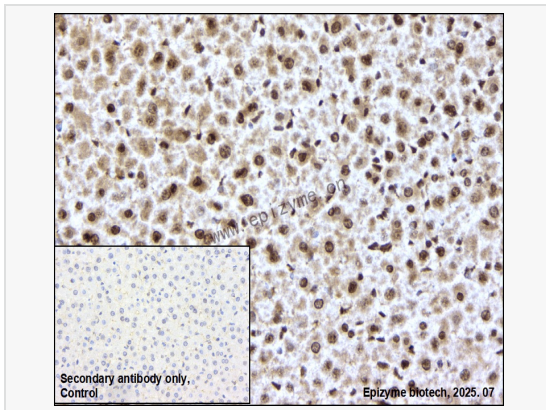
Lysates/proteins at 10 µg per lane.

Secondary antibody: Goat Anti-Rabbit IgG (H+L), HRP Conjugated (Cat. No. LF102) at 1:5,000 dilution

Predicted band size: 24 kDa

Observed band size: 20 kDa

Developed using the ECL technique (Cat. No. SQ201).



Immunohistochemistry - Anti-Cyclophilin B Rabbit mAb [46M55K99]

Sample: Paraformaldehyde-fixed, paraffin embedded rat liver tissue

Heat mediated antigen retrieval with Tris-EDTA buffer (pH 9.0) for 30 mins.

Primary antibody: R010406 at 1:200 dilution

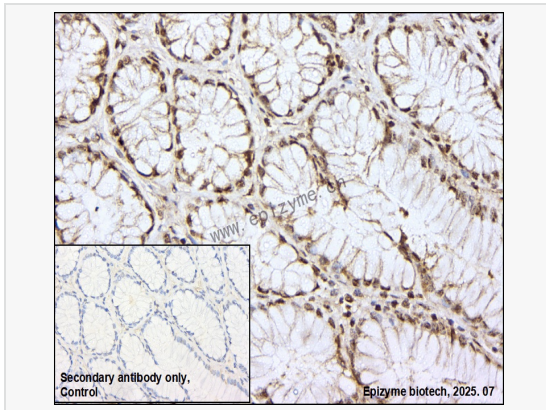
Secondary antibody: Goat Anti-Rabbit IgG (H+L), HRP conjugated at 1:1,000 dilution

DAB was used as the chromogen.

Counter stained with hematoxylin.

Positive/negative staining were presented.

Only the secondary antibody was used as the negative control.



Immunohistochemistry - Anti-Cyclophilin B Rabbit mAb [46M55K99]

Sample: Paraformaldehyde-fixed, paraffin embedded human gastric cancer tissue

Heat mediated antigen retrieval with Tris-EDTA buffer (pH 9.0) for 30 mins.

Primary antibody: R010406 at 1:200 dilution

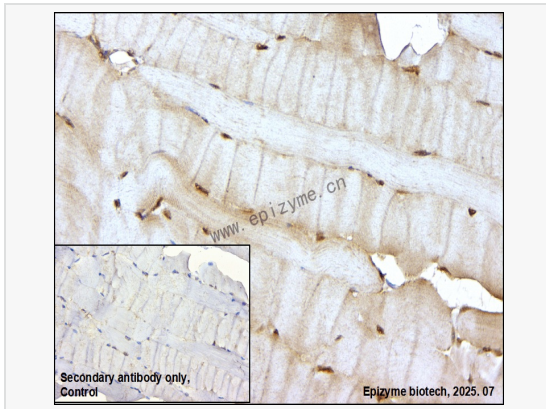
Secondary antibody: Goat Anti-Rabbit IgG (H+L), HRP conjugated at 1:1,000 dilution

DAB was used as the chromogen.

Counter stained with hematoxylin.

Positive/negative staining were presented.

Only the secondary antibody was used as the negative control.



Immunohistochemistry - Anti-Cyclophilin B Rabbit mAb [46M55K99]

Sample: Paraformaldehyde-fixed, paraffin embedded mouse muscle tissue

Heat mediated antigen retrieval with Tris-EDTA buffer (pH 9.0) for 30 mins.

Primary antibody: R010406 at 1:200 dilution

Secondary antibody: Goat Anti-Rabbit IgG (H+L), HRP conjugated at 1:1,000 dilution

DAB was used as the chromogen.

Counter stained with hematoxylin.

Positive/negative staining were presented.

Only the secondary antibody was used as the negative control.