

Anti-BRCC36 Rabbit mAb

Purified Recombinant Rabbit Monoclonal Antibody

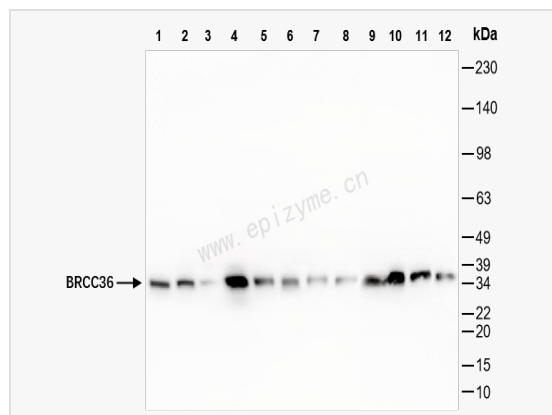
Catalog # R010353

Product Information

Application	WB, ELISA
Reactivity	Human, Mouse, Rat
Dilution	WB 1:1,000~1:5,000
Host	Rabbit
Clonality	Monoclonal
Clone No.	92L85K61
Isotype	IgG
Label	Unconjugated
Immunogen	A synthesized peptide derived from human BRCC36
Format	Affinity purified monoclonal antibody supplied in PBS with 0.02% sodium azide and 50% glycerol, pH 7.3.
Storage	Shipped on wet ice. Store at -20°C. Stable for 24 months from date of receipt. Aliquoting is unnecessary for -20°C storage.
Precautions	Anti-BRCC36 Rabbit mAb [92L85K61] is for research use only and not for use in diagnostic or therapeutic procedures.

Protein Information

Synonyms	BRCC36; C6.1A; CXorf53; BRCC3; Lys-63-specific deubiquitinase BRCC36; BRCA1-A complex subunit BRCC36; BRCA1/BRCA2-containing complex subunit 3; BRCA1/BRCA2-containing complex subunit 36; BRISC complex subunit BRCC36.
Calculated MW	Calculated MW: 36 kDa; Observed MW: 36 kDa
Uniprot ID	P46736
Gene ID	79184
Background	This gene encodes a subunit of the BRCA1-BRCA2-containing complex (BRCC), which is an E3 ubiquitin ligase. This complex plays a role in the DNA damage response, where it is responsible for the stable accumulation of BRCA1 at DNA break sites. The component encoded by this gene can specifically cleave Lys 63-linked polyubiquitin chains, and it regulates the abundance of these polyubiquitin chains in chromatin. The loss of this gene results in abnormal angiogenesis and is associated with syndromic moyamoya, a cerebrovascular angiopathy. Alternative splicing results in multiple transcript variants. A related pseudogene has been identified on chromosome 5. [provided by RefSeq, Jun 2011]
Cellular Location	Nucleus.Cytoplasm.Cytoplasm.Cytoskeleton.Spindle pole.Localizes at sites of DNA damage at double-strand breaks (DSBs) (PubMed:20656690, PubMed:26344097). Interaction with ABRAXAS2 retains BRCC3 in the cytoplasm (PubMed:20656690).
Tissue Location	Heart, brain, placenta, lung, liver, skeletal muscle, kidney and pancreas. Aberrantly expressed in the vast majority of breast tumors.



Western Blot - Anti-BRCC36 Rabbit mAb [92L85K61]

All lanes: R010353 at 1:5,000 dilution

Lane 1: Hel (Human erythroLeukemia suspension cell) whole cell lysates

Lane 2: HepG2 (Human hepatocarcinoma epithelial cell) whole cell lysates

Lane 3: K562 (Human chronic myeloid leukemia cell) whole cell lysates

Lane 4: U87 (Human malignant glioblastoma epithelial cells) whole cell lysates

Lane 5: Raw264.7 (Mouse mononuclear macrophage leukemia cell) whole cell lysates

Lane 6: Mouse spleen whole tissue lysates

Lane 7: Mouse embryo-like whole tissue lysates

Lane 8: Mouse liver whole tissue lysates

Lane 9: Rat spleen whole tissue lysates

Lane 10: Rat lymphoid whole tissue lysates

Lane 11: Rat liver whole tissue lysates

Lane 12: Rat adipose whole tissue lysates

Lysates/proteins at 10 µg per lane.

Secondary antibody: Goat Anti-Rabbit IgG (H+L), HRP Conjugated (Cat. No. LF102) at 1:5,000 dilution

Predicted band size: 36 kDa

Observed band size: 36 kDa

Developed using the ECL technique (Cat. No. SQ201).