

Anti-BAP31 Rabbit mAb

Purified Recombinant Rabbit Monoclonal Antibody

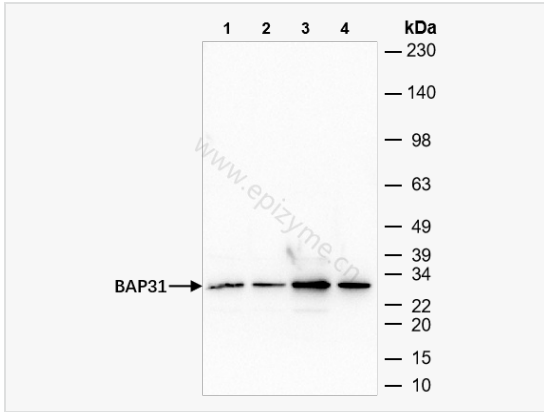
Catalog # R012439

Product Information

Application	WB, IHC-P/IF (Tissue-P), ELISA
Reactivity	Human
Dilution	WB 1:1,000~1:3,000; IHC-P 1:100~1:200; IF 1:100~1:200
Host	Rabbit
Clonality	Monoclonal
Clone No.	10M17K95
Isotype	IgG
Label	Unconjugated
Immunogen	A synthesized peptide derived from human BAP31
Format	Affinity purified monoclonal antibody supplied in PBS with 0.01% sodium azide and 50% glycerol, pH 7.3.
Storage	Shipped on wet ice. Store at -20°C. Stable for 24 months from date of receipt. Aliquoting is unnecessary for -20°C storage.
Precautions	Anti-BAP31 Rabbit mAb [10M17K95] is for research use only and not for use in diagnostic or therapeutic procedures.

Protein Information

Synonyms	6C6 AG, 6C6 AG tumor associated antigen, 6C6-AG tumor-associated antigen, 6C6AG, 6C6AG tumor associated antigen, Accessory protein BAP 31, Accessory protein BAP31, B cell receptor associated protein 31, B-cell receptor-associated protein 31, BA31, BAP 31, Bap31, BAP31_HUMAN, BCAP 31, BCAP31, BCR associated protein Bap 31, BCR associated protein Bap31, BCR-associated protein 31, CDM, CDM protein, DXS1357E, MS950, p28, p28 Bap31, Protein CDM, RP23-329M9.5.
Calculated MW	Calculated MW: 28 kDa; Observed MW: 25 kDa
Uniprot ID	P51572
Gene ID	10134
Background	This gene encodes a member of the B-cell receptor associated protein 31 superfamily. The encoded protein is a multi-pass transmembrane protein of the endoplasmic reticulum that is involved in the anterograde transport of membrane proteins from the endoplasmic reticulum to the Golgi and in caspase 8-mediated apoptosis. Microdeletions in this gene are associated with contiguous ABCD1/DXS1375E deletion syndrome (CADD5), a neonatal disorder. Alternative splicing of this gene results in multiple transcript variants. Two related pseudogenes have been identified on chromosome 16. [provided by RefSeq, Jan 2012]
Cellular Location	Endoplasmic reticulum membrane. Endoplasmic reticulum-Golgi intermediate compartment membrane. May shuttle between the ER and the intermediate compartment/cis-Golgi complex.
Tissue Location	Ubiquitous.



Western Blot - Anti-BAP31 Rabbit mAb [10M17K95]

All lanes: R012439 at 1:3,000 dilution

Lane 1: HepG2 (Human hepatocarcinoma epithelial cell) whole cell lysates

Lane 2: HCT116 (Human colorectal carcinoma epithelial cell) whole cell lysates

Lane 3: A431 (Human epidermoid teratoma cell line) whole cell lysates

Lane 4: T24 (Human bladder cancer epithelial cell) whole cell lysates

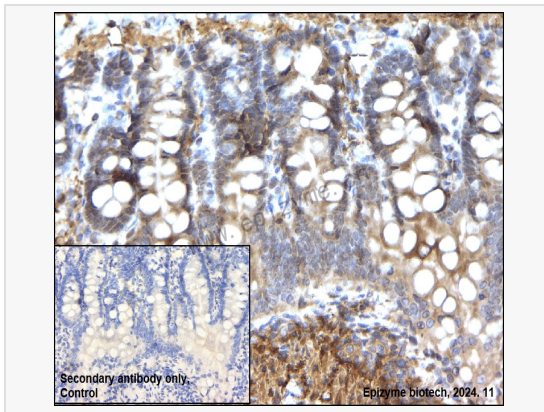
Lysates/proteins at 10 µg per lane.

Secondary antibody: Goat Anti-Rabbit IgG(H+L), HRP Conjugated (Cat. No. LF102) at 1:5,000 dilution

Predicted band size: 28 kDa

Observed band size: 25 kDa

Developed using the ECL technique (Cat. No. SQ201).



Immunohistochemistry - Anti-BAP31 Rabbit mAb [10M17K95]

Sample: Paraformaldehyde-fixed, paraffin embedded rat colon tissue

Heat mediated antigen retrieval with Tris-EDTA buffer (pH 9.0) for 30 mins.

Primary antibody: R012439 at 1:200 dilution

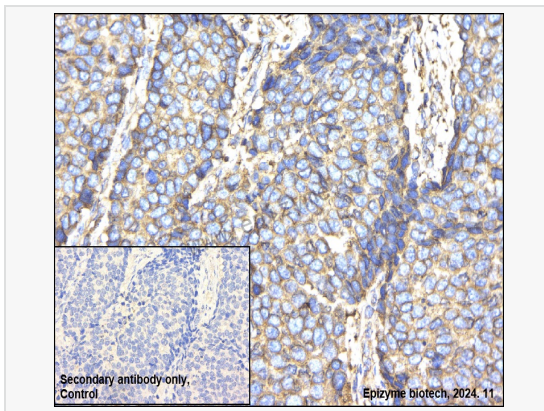
Secondary antibody: Goat Anti-Rabbit IgG (H+L), HRP conjugated at 1:1,000 dilution

DAB was used as the chromogen.

Counter stained with hematoxylin.

Positive/negative staining were presented.

Only the secondary antibody was used as the negative control.



Immunohistochemistry - Anti-BAP31 Rabbit mAb [10M17K95]

Sample: Paraformaldehyde-fixed, paraffin embedded Human lung cancer tissue

Heat mediated antigen retrieval with Tris-EDTA buffer (pH 9.0) for 30 mins.

Primary antibody: R012439 at 1:200 dilution

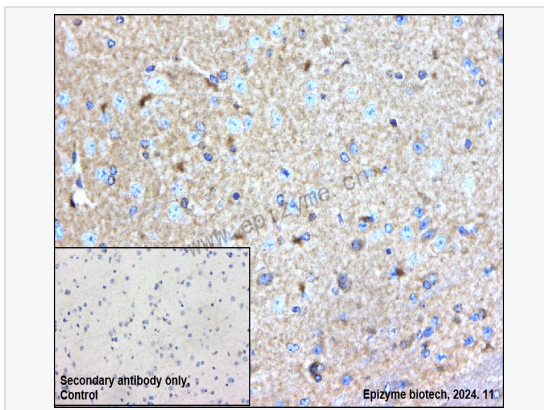
Secondary antibody: Goat Anti-Rabbit IgG (H+L), HRP conjugated at 1:1,000 dilution

DAB was used as the chromogen.

Counter stained with hematoxylin.

Positive/negative staining were presented.

Only the secondary antibody was used as the negative control.



Immunohistochemistry - Anti-BAP31 Rabbit mAb [10M17K95]

Sample: Paraformaldehyde-fixed, paraffin embedded mouse brain tissue

Heat mediated antigen retrieval with Tris-EDTA buffer (pH 9.0) for 30 mins.

Primary antibody: R012439 at 1:200 dilution

Secondary antibody: Goat Anti-Rabbit IgG (H+L), HRP conjugated at 1:1,000 dilution

DAB was used as the chromogen.

Counter stained with hematoxylin.

Positive/negative staining were presented.

Only the secondary antibody was used as the negative control.