

Anti-APPL Rabbit mAb

Purified Recombinant Rabbit Monoclonal Antibody

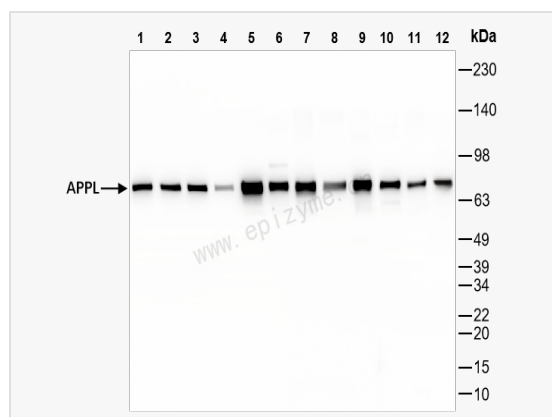
Catalog # R011596

Product Information

Application	WB, IF (Cell)/ICC, ELISA
Reactivity	Human, Mouse, Rat
Dilution	WB 1:1,000~1:3,000; IF 1:100~1:200
Host	Rabbit
Clonality	Monoclonal
Clone No.	59L67K49
Isotype	IgG
Label	Unconjugated
Immunogen	A synthesized peptide derived from human APPL
Format	Affinity purified monoclonal antibody supplied in PBS with 0.02% sodium azide and 50% glycerol, pH 7.3.
Storage	Shipped on wet ice. Store at -20°C. Stable for 24 months from date of receipt. Aliquoting is unnecessary for -20°C storage.
Precautions	Anti-APPL Rabbit mAb [59L67K49] is for research use only and not for use in diagnostic or therapeutic procedures.

Protein Information

Synonyms	APPL; DIP13A; KIAA1428; APPL1; DCC-interacting protein 13-alpha; Dip13-alpha.
Calculated MW	Calculated MW: 80 kDa; Observed MW: 80 kDa
Uniprot ID	Q9UKG1
Gene ID	26060
Background	The protein encoded by this gene has been shown to be involved in the regulation of cell proliferation, and in the crosstalk between the adiponectin signalling and insulin signalling pathways. The encoded protein binds many other proteins, including RAB5A, DCC, AKT2, PIK3CA, adiponectin receptors, and proteins of the NuRD/MeCP1 complex. This protein is found associated with endosomal membranes, but can be released by EGF and translocated to the nucleus. [provided by RefSeq, Jul 2008]
Cellular Location	Early endosome membrane.Peripheral membrane protein.Nucleus.Cytoplasm.Endosome.Cell projection.Ruffle.Cytoplasmic vesicle.Phagosome.Early endosomal membrane-bound and nuclear. Translocated into the nucleus upon release from endosomal membranes following internalization of EGF.
Tissue Location	High levels in heart, ovary, pancreas and skeletal muscle.



Western Blot - Anti-APPL Rabbit mAb [59L67K49]

All lanes: R011596 at 1:3,000 dilution

Lane 1: HeLa (Human cervix adenocarcinoma epithelial cell) whole cell lysates

Lane 2: HepG2 (Human hepatocarcinoma epithelial cell) whole cell lysates

Lane 3: HCT116 (Human colorectal carcinoma epithelial cell) whole cell lysates

Lane 4: K562 (Human chronic myeloid leukemia cell) whole cell lysates

Lane 5: U87 (Human malignant glioblastoma epithelial cells) whole cell lysates

Lane 6: C2C12 (Mouse myoblasts epithelial cell) whole cell lysates

Lane 7: Mouse embryo-like whole tissue lysates

Lane 8: Mouse heart whole tissue lysates

Lane 9: Mouse brain whole tissue lysates

Lane 10: PC-12 (Rat adrenal pheochromocytoma epithelial cell) whole cell lysates

Lane 11: Rat heart whole tissue lysates

Lane 12: Rat brain whole tissue lysates

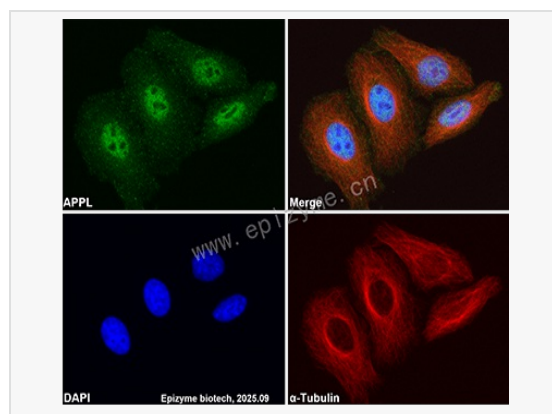
Lysates/proteins at 10 µg per lane.

Secondary antibody: Goat Anti-Rabbit IgG (H+L), HRP Conjugated (Cat. No. LF102) at 1:5,000 dilution

Predicted band size: 80 kDa

Observed band size: 80 kDa

Developed using the ECL technique (Cat. No. SQ201).



Immunofluorescence - Anti-APPL Rabbit mAb [59L67K49]

Sample: HeLa cells

The cells were fixed with 4% paraformaldehyde (10 min), permeabilized with 0.5% Triton X-100 for 10 minutes and then blocked with 5% BSA in 0.1% PBS-Tween for 0.5 hours.

Primary antibodies: R011596 at 1:100 dilution and α-tubulin Mouse Monoclonal Antibody (Cat. No. LF209) at 1:100 dilution

Secondary antibodies: Goat anti-Rabbit (488) at 1:1,000 dilution (shown in green) and Goat anti-Mouse (555) at 1:1,000 dilution (shown in red)

Nuclei were stained with DAPI (shown in blue).