

Anti-HAT1/KAT1 Rabbit mAb

Purified Rabbit Monoclonal Antibody

Catalog # R012462

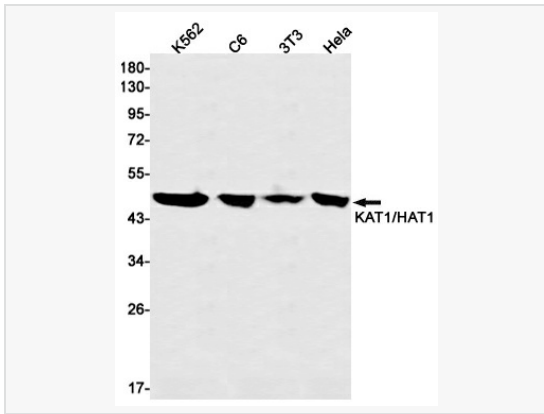
Product Information

Application	WB, IHC-P/IF (Tissue-P), IP, ELISA
Reactivity	Human, Mouse, Rat
Dilution	WB 1:500~1:1,000; IHC-P 1:50~1:100; IP 1:20
Host	Rabbit
Clonality	Monoclonal
Clone No.	78K78M16
Isotype	IgG
Label	Unconjugated
Immunogen	Recombinant protein of human KAT1/HAT1
Format	Buffer System: 50mM Tris-Glycine(pH 7.4), 0.15M NaCl, 40% Glycerol, 0.01% Sodium azide and 0.05% BSA Purification: Affinity Purified.
Storage	Shipped on wet ice. Store at -20°C. Stable for 24 months from date of receipt. Aliquoting is unnecessary for -20°C storage.
Precautions	Anti-HAT1/KAT1 Rabbit antibody [78K78M16] is for research use only and not for use in diagnostic or therapeutic procedures.

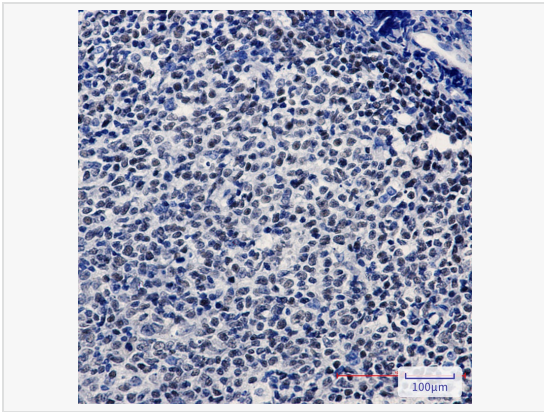
Protein Information

Synonyms	hat1, KAT1.
Calculated MW	Calculated MW: 50 kDa; Observed MW: 45 kDa
Uniprot ID	O14929
Gene ID	8520
Background	Acetylates soluble but not nucleosomal histone H4 at 'Lys-5' (H4K5ac) and 'Lys-12' (H4K12ac) and, to a lesser extent, acetylates histone H2A at 'Lys-5' (H2AK5ac). Has intrinsic substrate specificity that modifies lysine in recognition sequence GXGKXG.

Validation Images



Western blot analysis of KAT1/HAT1 in K562, C6, 3T3, HeLa lysates using KAT1 antibody.



Immunohistochemistry analysis of paraffin-embedded Human tonsil using KAT1/HAT1 antibody. High-pressure and temperature Sodium Citrate pH 6.0 was used for antigen retrieval.