

Anti-Integrin alpha V Rabbit mAb

Purified Recombinant Rabbit Monoclonal Antibody

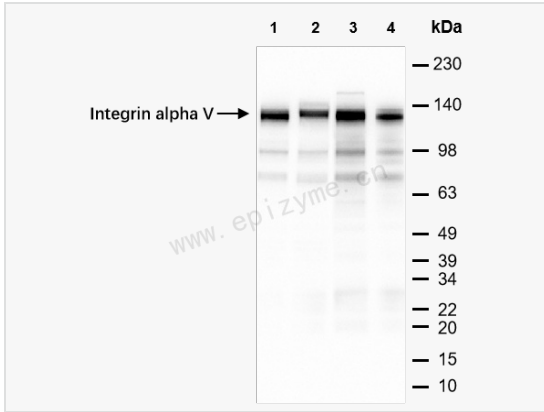
Catalog # R011791

Product Information

Application	IF (Cell)/ICC, WB, IHC-P/IF (Tissue-P), ELISA
Reactivity	Human, Mouse
Dilution	WB 1:1,000~1:2,000; IHC-P 1:100~1:200; IF 1:100~1:200
Host	Rabbit
Clonality	Monoclonal
Clone No.	29L34M99
Isotype	IgG
Label	Unconjugated
Immunogen	Recombinant protein of human Integrin alpha V
Format	Affinity purified monoclonal antibody supplied in PBS with 0.01% sodium azide and 50% glycerol, pH 7.3.
Storage	Shipped on wet ice. Store at -20°C. Stable for 24 months from date of receipt. Aliquoting is unnecessary for -20°C storage.
Precautions	Anti-Integrin alpha V Rabbit mAb [29L34M99] is for research use only and not for use in diagnostic or therapeutic procedures.

Protein Information

Synonyms	antigen identified by monoclonal antibody L230, CD 51, CD51, DKFZp686A08142, Integrin alpha five, integrin alpha V beta 3, Integrin alpha-5, integrin alpha-V, Integrin alpha-V light chain, integrin alphaVbeta3, integrin, alpha V (vitronectin receptor, alpha polypeptide, antigen CD51), ITAV_HUMAN, ITGAV, MSK 8, Msk8, Vitronectin receptor subunit alpha, VNRA, VTNR.
Calculated MW	Calculated MW: 116 kDa; Observed MW: 130 kDa
Uniprot ID	P06756
Gene ID	3685
Background	The alpha-V (ITGAV) integrins are receptors for vitronectin, cytotactin, fibronectin, fibrinogen, laminin, matrix metalloproteinase-2, osteopontin, osteomodulin, prothrombin, thrombospondin and vWF. They recognize the sequence R-G-D in a wide array of ligands. In case of HIV-1 infection, the interaction with extracellular viral Tat protein seems to enhance angiogenesis in Kaposi's sarcoma lesions.
Cellular Location	Membrane.



Western Blot - Anti-Integrin alpha V Rabbit mAb [29L34M99]

All lanes: R011791 at 1:2,000 dilution

Lane 1: HeLa (Human cervix adenocarcinoma epithelial cell) whole cell lysates

Lane 2: HepG2 (Human hepatocarcinoma epithelial cell) whole cell lysates

Lane 3: A431 (Human epidermoid teratoma cell line) whole cell lysates

Lane 4: T24 (Human bladder cancer epithelial cell) whole cell lysates

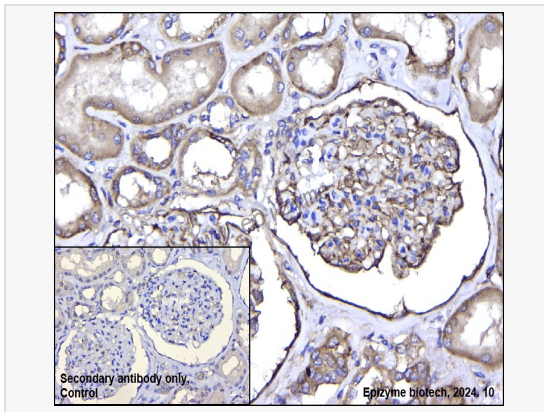
Lysates/proteins at 10 µg per lane.

Secondary antibody: Goat Anti-Rabbit IgG (H+L), HRP Conjugated (Cat. No. LF102) at 1:5,000 dilution

Predicted band size: 116 kDa

Observed band size: 130 kDa

Developed using the ECL technique (Cat. No. SQ201).



Immunohistochemistry - Anti-Integrin alpha V Rabbit mAb [29L34M99]

Sample: Paraformaldehyde-fixed, paraffin embedded human renal carcinoma tissue

Heat mediated antigen retrieval with Tris-EDTA buffer (pH 9.0) for 30 mins.

Primary antibody: R011791 at 1:200 dilution

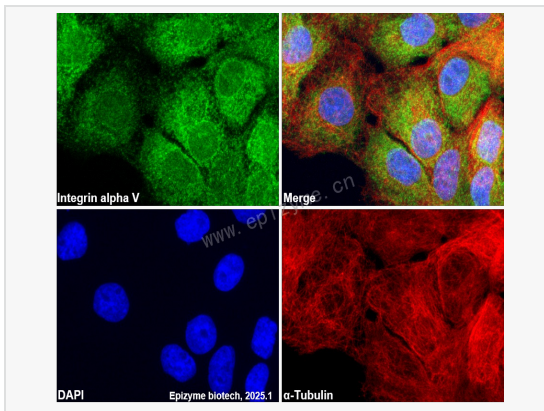
Secondary antibody: Goat Anti-Rabbit IgG (H+L), HRP conjugated at 1:1,000 dilution

DAB was used as the chromogen.

Counter stained with hematoxylin.

Positive/negative staining were presented.

Only the secondary antibody was used as the negative control.



Immunofluorescence - Anti-Integrin alpha V Rabbit mAb [29L34M99]

Sample: A431 cells

The cells were fixed with 4% paraformaldehyde (10 min), permeabilized with 0.5% Triton X-100 for 10 minutes and then blocked with 5% BSA in 0.1% PBS-Tween for 0.5 hours.

Primary antibodies: R011791 at 1:100 dilution and α -tubulin Mouse Monoclonal Antibody (Cat. No. LF209) at 1:100 dilution

Secondary antibodies: Goat anti-Rabbit (488) at 1:1,000 dilution (shown in green) and Goat anti-Mouse (555) at 1:1,000 dilution (shown in red)

Nuclei were stained with DAPI (shown in blue).