

Anti-Importin 9 Rabbit mAb

Purified Recombinant Rabbit Monoclonal Antibody

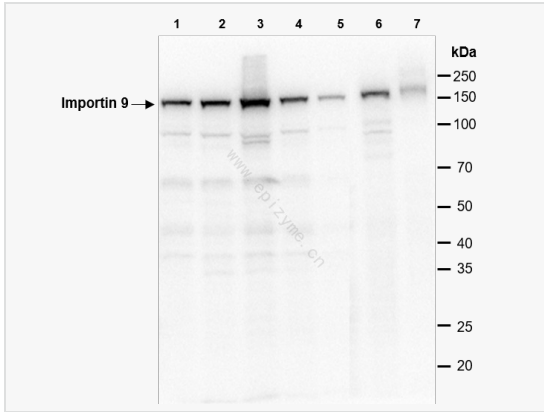
Catalog # R010205

Product Information

Application	WB, IHC-P/IF (Tissue-P), IF (Cell)/ICC, ELISA
Reactivity	Mouse, Human
Dilution	WB 1:1,000~1:2,000; IHC-P 1:200; IF 1:100
Host	Rabbit
Clonality	Monoclonal
Clone No.	38L48L23
Isotype	IgG
Label	Unconjugated
Immunogen	A synthesized peptide derived from human Importin 9
Format	Affinity purified monoclonal antibody supplied in PBS with 0.01% sodium azide and 50% glycerol, pH 7.3.
Storage	Shipped on wet ice. Store at -20°C. Stable for 24 months from date of receipt. Aliquoting is unnecessary for -20°C storage.
Precautions	Anti-Importin 9 Rabbit mAb [38L48L23] is for research use only and not for use in diagnostic or therapeutic procedures.

Protein Information

Synonyms	importin 9, Imp9, Ran-binding protein 9, RanBP9.
Calculated MW	Calculated MW: 115 kDa; Observed MW: 115 kDa
Uniprot ID	Q96P70
Gene ID	55705
Background	Nuclear transport receptor that mediates nuclear import of proteins, such as histones, proteasome and actin.



Western Blot - Anti-Importin 9 Rabbit mAb [38L48L23]

All lanes: R010205 at 1:1,000 dilution

Lane 1: HeLa (human cervix adenocarcinoma epithelial cell) whole cell lysates

Lane 2: Jurkat (human T lymphocytic leukemia cell) whole cell lysates

Lane 3: HCT116 (human colorectal carcinoma epithelial cell) whole cell lysates

Lane 4: SCC-9 (human tongue squamous carcinoma epithelial cell) whole cell lysates

Lane 5: U2OS (human osteosarcoma epithelial cell) whole cell lysates

Lane 6: Balb/c mouse kidney whole tissue lysates

Lane 7: Balb/c mouse brain whole tissue lysates

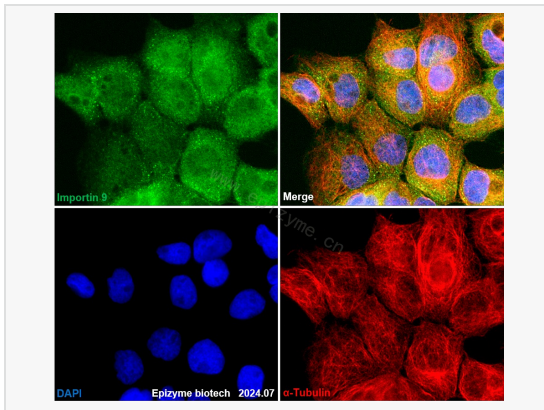
Lysates/proteins at 10 µg per lane.

Secondary antibody: Goat Anti-Rabbit IgG(H+L), HRP Conjugated (Cat. No. LF102) at 1:5,000 dilution

Predicted band size: 115 kDa

Observed band size: 115 kDa

Developed using the ECL technique (Cat. No. SQ201).



Immunofluorescence - Anti-Importin 9 Rabbit mAb [38L48L23]

Sample: A431 cells

The cells were fixed with 4% paraformaldehyde (10 min), permeabilized with 0.5% Triton X-100 for 10 minutes and then blocked with 5% BSA in 0.1% PBS-Tween for 0.5 hours.

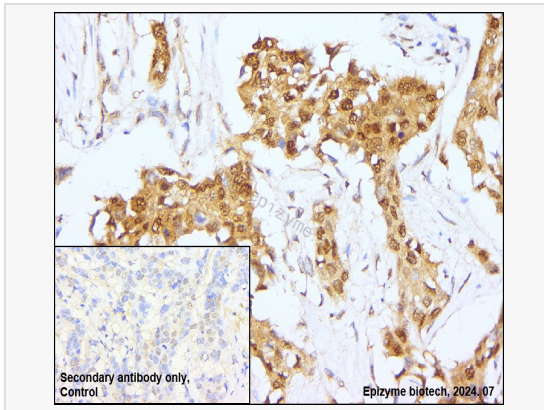
Primary antibodies: R010205 at 1:100 dilution and α -tubulin Mouse Monoclonal

Antibody (Cat. No. LF209) at 1:100 dilution

Secondary antibodies: Goat anti-Rabbit (488) at 1:1,000 dilution (shown in green) and

Goat anti-Mouse (555) at 1:1,000 dilution (shown in red)

Nuclei were stained with DAPI (shown in blue).



Immunohistochemistry - Anti-Importin 9 Rabbit mAb [38L48L23]

Sample: Paraformaldehyde-fixed, paraffin embedded human breast carcinoma tissue

Heat mediated antigen retrieval with Tris-EDTA buffer (pH 9.0) for 30 mins.

Primary antibody: R010205 at 1:200 dilution

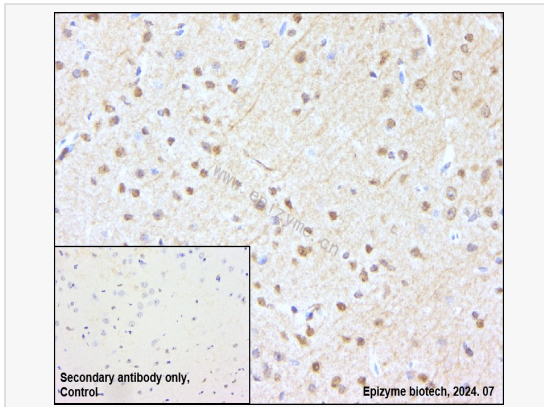
Secondary antibody: Goat Anti-Rabbit IgG (H+L), HRP conjugated at 1:1,000 dilution

DAB was used as the chromogen.

Counter stained with hematoxylin.

Positive/negative staining were presented.

Only the secondary antibody was used as the negative control.



Immunohistochemistry - Anti-Importin 9 Rabbit mAb [38L48L23]

Sample: Paraformaldehyde-fixed, paraffin embedded mouse brain tissue

Heat mediated antigen retrieval with Tris-EDTA buffer (pH 9.0) for 30 mins.

Primary antibody: R010205 at 1:200 dilution

Secondary antibody: Goat Anti-Rabbit IgG (H+L), HRP conjugated at 1:1,000 dilution

DAB was used as the chromogen.

Counter stained with hematoxylin.

Positive/negative staining were presented.

Only the secondary antibody was used as the negative control.