

Anti-Phospho-p38 (Thr180/Tyr182) Rabbit pAb

Purified Rabbit Polyclonal Antibody

Catalog # P010759

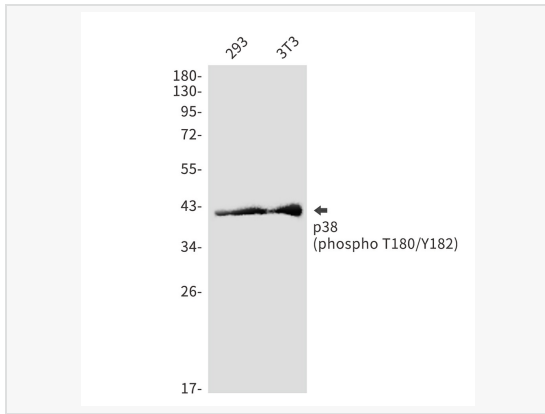
Product Information

Application	WB, ELISA
Reactivity	Human, Mouse
Dilution	WB 1:500~1:1,000
Host	Rabbit
Clonality	Polyclonal
Isotype	IgG
Label	Unconjugated
Immunogen	A synthetic phosphopeptide corresponding to residues surrounding Thr180/Tyr182 of human p38
Format	Buffer System: 50mM Tris-Glycine(pH 7.4), 0.15M NaCl, 40% Glycerol, 0.01% Sodium azide and 0.05% BSA Purification: Affinity Purified.
Storage	Shipped on wet ice. Store at -20°C. Stable for 24 months from date of receipt. Aliquoting is unnecessary for -20°C storage.
Precautions	Anti-Phospho-p38 (Thr180/Tyr182) antibody is for research use only and not for use in diagnostic or therapeutic procedures.

Protein Information

Synonyms	MAPK14, CSBP, CSBP1, CSBP2, CSPB1, MXI2, SAPK2A, Mitogen-activated protein kinase 14, MAP kinase 14, MAPK 14, Cytokine suppressive anti-inflammatory drug-binding protein, CSAID-binding protein, CSBP, MAP kinase MXI2, MAX-interacting protein.
Calculated MW	Calculated MW: 41 kDa; Observed MW: 41 kDa
Uniprot ID	Q16539
Gene ID	1432
Background	Responds to activation by environmental stress, pro-inflammatory cytokines and lipopolysaccharide (LPS) by phosphorylating a number of transcription factors, such as ELK1 and ATF2 and several downstream kinases, such as MAPKAPK2 and MAPKAPK5. Plays a critical role in the production of some cytokines, for example IL-6.

Validation Images



Western blot analysis of p38 (Phospho-T180/Y182) in 293, 3T3 lysates using Phospho-p38 (Thr180/Tyr182) antibody.