

Anti-Phospho-p38 (Tyr323) Rabbit pAb

Purified Rabbit Polyclonal Antibody

Catalog # P012361

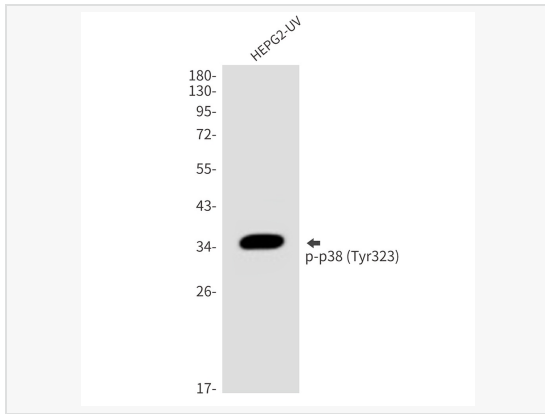
Product Information

Application	WB, IHC-P/IF (Tissue-P), ELISA
Reactivity	Human, Mouse, Rat
Dilution	WB 1:500~1:1,000; IHC-P 1:50~1:100; ELISA 1:10,000
Host	Rabbit
Clonality	Polyclonal
Isotype	IgG
Label	Unconjugated
Immunogen	Synthetic peptide of human MAPK14
Format	Buffer System: Liquid in PBS containing 50% glycerol, 0.5% BSA and 0.02% sodium azide, pH 7.3. Purification: Affinity Purified.
Storage	Shipped on wet ice. Store at -20°C. Stable for 24 months from date of receipt. Aliquoting is unnecessary for -20°C storage.
Precautions	Anti-Phospho-p38 (Tyr323) antibody is for research use only and not for use in diagnostic or therapeutic procedures.

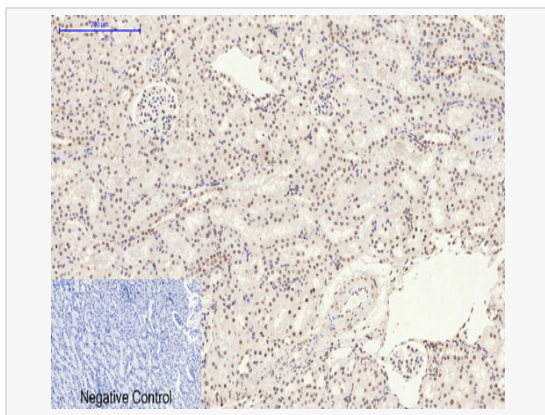
Protein Information

Synonyms	MAPK14, CSBP, CSBP1, CSBP2, CSPB1, MXI2, SAPK2A, Mitogen-activated protein kinase 14, MAP kinase 14, MAPK 14, Cytokine suppressive anti-inflammatory drug-binding protein, CSAID-binding protein, CSBP, MAP kinase MXI2, MAX-interacting protein.
Calculated MW	Calculated MW: 41 kDa; Observed MW: 35 kDa
Uniprot ID	Q16539
Gene ID	1432
Background	Responds to activation by environmental stress, pro-inflammatory cytokines and lipopolysaccharide (LPS) by phosphorylating a number of transcription factors, such as ELK1 and ATF2 and several downstream kinases, such as MAPKAPK2 and MAPKAPK5. Plays a critical role in the production of some cytokines, for example IL-6.

Validation Images



Western blot analysis of Phospho-p38 (Tyr323) in HepG2 lysates using Phospho-p38 (Tyr323) antibody.



Immunohistochemistry analysis of paraffin-embedded rat kidney tissue using Phospho-p38 (Tyr323) antibody. High-pressure and temperature Sodium Citrate pH 6.0 was used for antigen retrieval.