

Anti-Phospho-DRP1 (Ser637) Rabbit pAb

Purified Rabbit Polyclonal Antibody

Catalog # P013612

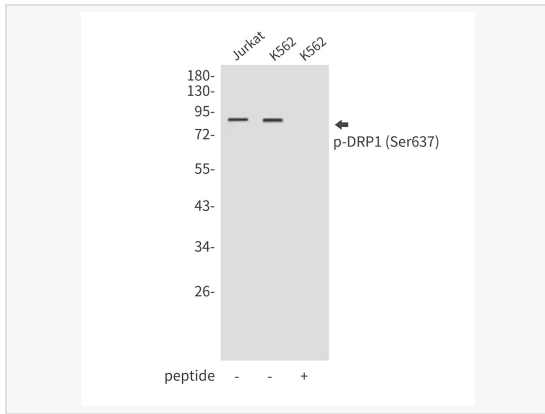
Product Information

Application	WB, ELISA
Reactivity	Human
Dilution	WB 1:500~1:1,000
Host	Rabbit
Clonality	Polyclonal
Isotype	IgG
Label	Unconjugated
Immunogen	Synthetic peptide of human DNM1L
Format	Buffer System: Liquid in PBS containing 50% glycerol, 0.5% BSA and 0.02% sodium azide, pH 7.3. Purification: Affinity Purified.
Storage	Shipped on wet ice. Store at -20°C. Stable for 24 months from date of receipt. Aliquoting is unnecessary for -20°C storage.
Precautions	Anti-Phospho-DRP1 (Ser637) antibody is for research use only and not for use in diagnostic or therapeutic procedures.

Protein Information

Synonyms	DNM1L, DLP1, DRP1, Dynamin-1-like protein, Dnm1p/Vps1p-like protein, DVLP, Dynamin family member proline-rich carboxyl-terminal domain less, Dymple, Dynamin-like protein, Dynamin-like protein 4, Dynamin-like protein IV, HdynIV, Dynamin-rela.
Calculated MW	Calculated MW: 82 kDa; Observed MW: 82 kDa
Uniprot ID	O00429
Gene ID	10059
Background	The protein encoded by this gene is a member of the dynamin superfamily of GTPases. Members of the dynamin-related subfamily, including the <i>S. cerevisiae</i> proteins Dnm1 and Vps1, contain the N-terminal tripartite GTPase domain but do not have the pleckstrin homology or proline-rich domains. This protein establishes mitochondrial morphology through a role in distributing mitochondrial tubules throughout the cytoplasm. The gene has 3 alternatively spliced transcripts encoding different isoforms. These transcripts are alternatively polyadenylated.

Validation Images



Western blot analysis of Phospho-DRP1 (Ser637) in Jurkat lysates using Phospho-DRP1 (Ser637) antibody.