

## Anti-Phospho-CREB (Ser142) Rabbit pAb

Purified Rabbit Polyclonal Antibody

Catalog # P013164

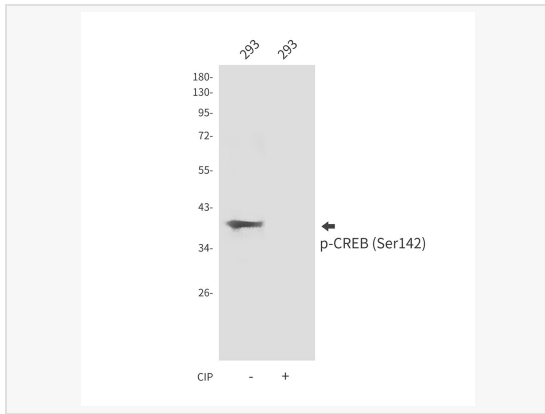
### Product Information

Application	WB, IHC-P/IF (Tissue-P), ELISA
Reactivity	Human, Mouse, Rat
Dilution	WB 1:500~1:1,000; IHC-P 1:50~1:100
Host	Rabbit
Clonality	Polyclonal
Isotype	IgG
Label	Unconjugated
Immunogen	Synthetic peptide of human CREB1
Format	Buffer System: Liquid in PBS containing 50% glycerol, 0.5% BSA and 0.02% sodium azide, pH 7.3. Purification: Affinity Purified.
Storage	Shipped on wet ice. Store at -20°C. Stable for 24 months from date of receipt. Aliquoting is unnecessary for -20°C storage.
Precautions	Anti-Phospho-CREB (Ser142) antibody is for research use only and not for use in diagnostic or therapeutic procedures.

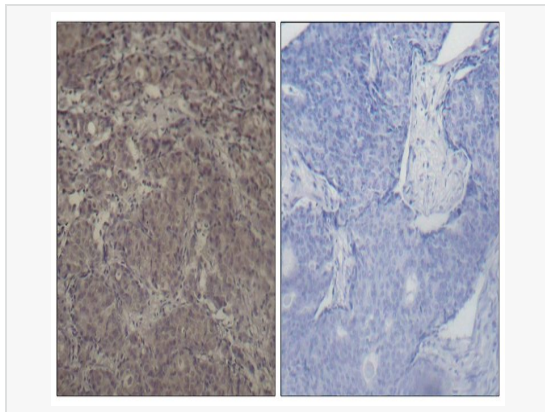
### Protein Information

Synonyms	CREB1, Cyclic AMP-responsive element-binding protein 1, CREB-1, cAMP-responsive element-binding protein 1.
Calculated MW	Calculated MW: 35 kDa; Observed MW: 37,43 kDa
Uniprot ID	P16220
Gene ID	1385
Background	This gene encodes a transcription factor that is a member of the leucine zipper family of DNA binding proteins. This protein binds as a homodimer to the cAMP-responsive element, an octameric palindrome.

## Validation Images



Western blot analysis of Phospho-CREB (Ser142) in 293 lysates using Phospho-CREB (Ser142) antibody.



Immunohistochemistry analysis of paraffin-embedded Human breast carcinoma tissue using CREB (Phospho-Ser142) antibody. High-pressure and temperature Sodium Citrate pH 6.0 was used for antigen retrieval. Sample with blocking peptide on the right.