

Anti-Prostate Specific Antigen Rabbit pAb

Purified Rabbit Polyclonal Antibody

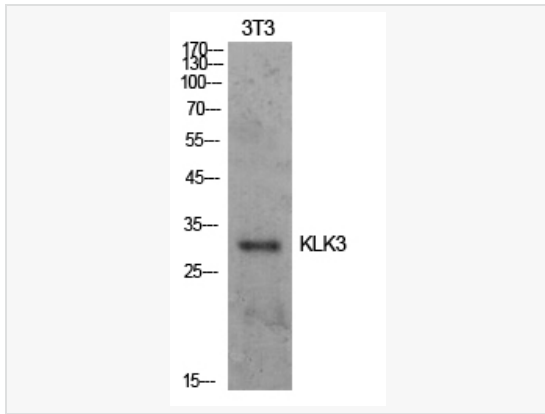
Catalog # P010906

Product Information

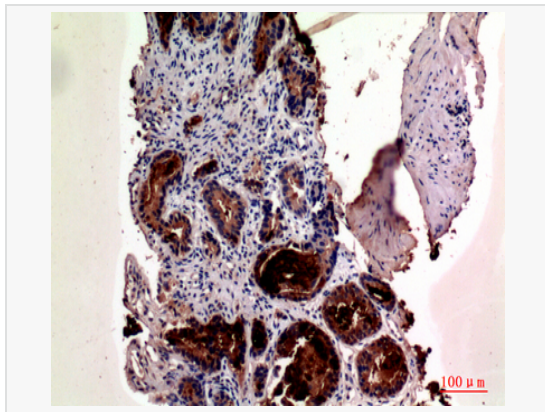
Application	WB, IHC-P/IF (Tissue-P), ELISA
Reactivity	Human
Dilution	WB 1:500~1:1,000; IHC-P 1:50~1:100; ELISA 1:10,000
Host	Rabbit
Clonality	Polyclonal
Isotype	IgG
Label	Unconjugated
Immunogen	The antiserum was produced against synthesized peptide derived from the Internal region of human KLK3.
Format	Buffer System: Liquid in PBS containing 50% glycerol, 0.5% BSA and 0.02% sodium azide, pH 7.3. Purification: Affinity Purified.
Storage	Shipped on wet ice. Store at -20°C. Stable for 24 months from date of receipt. Aliquoting is unnecessary for -20°C storage.
Precautions	Anti-Prostate Specific Antigen antibody is for research use only and not for use in diagnostic or therapeutic procedures.

Protein Information

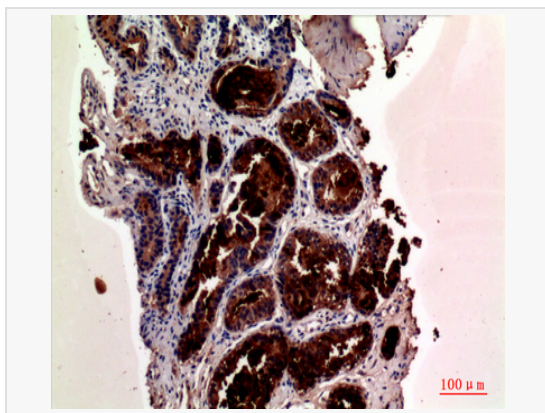
Synonyms	KLK3, APS, Prostate-specific antigen, PSA, Gamma-seminoprotein, Semin, Kallikrein-3, P-30 antigen, Semenogelase.
Calculated MW	Calculated MW: 29 kDa; Observed MW: 30~34 kDa
Uniprot ID	P07288
Gene ID	354
Background	PSA/KLK3 is a member of the glandular kallikrein subfamily of serine proteases. Upon cleavage of 7 amino-terminal amino acids, it is activated to liquefy semen in the seminal coagulum. Although PSA/KLK3 is produced in healthy individuals, investigators have found abnormally high levels in the blood of men with advanced prostate cancer.



Western blot analysis of Prostate Specific Antigen in NIH3T3 lysates using Prostate Specific Antigen antibody.



Immunohistochemistry analysis of paraffin-embedded Human prostatecancer using Prostate Specific Antigen antibody. High-pressure and temperature Sodium Citrate pH 6.0 was used for antigen retrieval.



Immunohistochemistry analysis of paraffin-embedded Human prostatecancer using Prostate Specific Antigen antibody. High-pressure and temperature Sodium Citrate pH 6.0 was used for antigen retrieval.