

## Anti-CRTH2 Rabbit pAb

Purified Rabbit Polyclonal Antibody

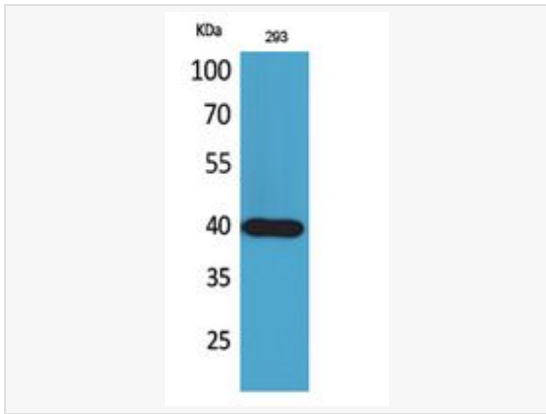
Catalog # P011020

### Product Information

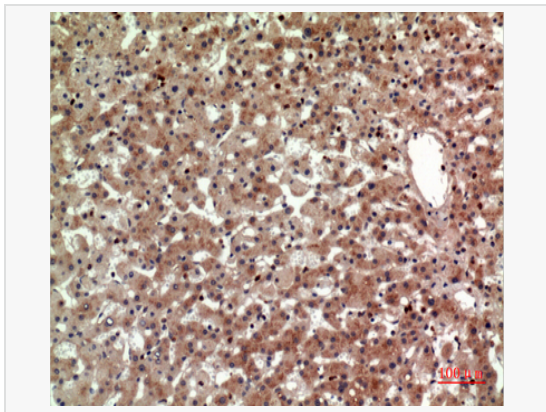
Application	WB, IHC-P/IF (Tissue-P), ELISA
Reactivity	Human, Mouse
Dilution	WB 1:500~1:1,000; IHC-P 1:50~1:100; ELISA 1:10,000
Host	Rabbit
Clonality	Polyclonal
Isotype	IgG
Label	Unconjugated
Immunogen	The antiserum was produced against synthesized peptide derived from the Internal region of human PTGDR2.
Format	Buffer System: Liquid in PBS containing 50% glycerol, 0.5% BSA and 0.02% sodium azide, pH 7.3. Purification: Affinity Purified.
Storage	Shipped on wet ice. Store at -20°C. Stable for 24 months from date of receipt. Aliquoting is unnecessary for -20°C storage.
Precautions	Anti-CRTH2 antibody is for research use only and not for use in diagnostic or therapeutic procedures.

### Protein Information

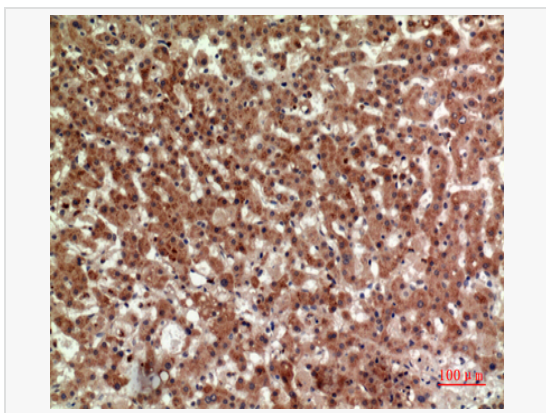
Synonyms	PTGDR2, CRTH2, DL1R, GPR44, Prostaglandin D2 receptor 2, Chemoattractant receptor-homologous molecule expressed on Th2 cells, G-protein coupled receptor 44, CD294.
Calculated MW	Calculated MW: 43 kDa; Observed MW: 43 kDa
Uniprot ID	Q9Y5Y4
Gene ID	11251
Background	Receptor for prostaglandin D2 (PGD2).



Western blot analysis of CRTH2 in 293 lysates using CRTH2 antibody.



Immunohistochemistry analysis of paraffin-embedded Human liver using CRTH2 antibody. High-pressure and temperature Sodium Citrate pH 6.0 was used for antigen retrieval.



Immunohistochemistry analysis of paraffin-embedded Human liver using CRTH2 antibody. High-pressure and temperature Sodium Citrate pH 6.0 was used for antigen retrieval.