

## Anti-KLF13 Rabbit pAb

Purified Rabbit Polyclonal Antibody

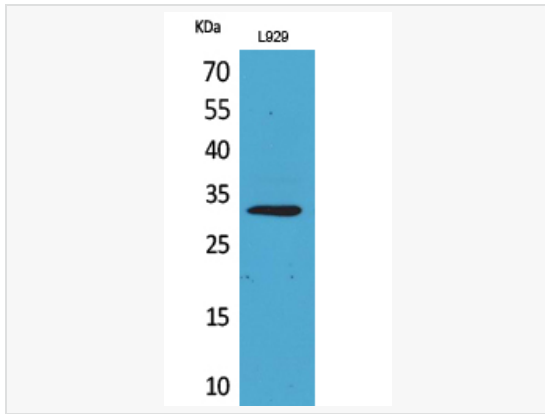
Catalog # P012165

### Product Information

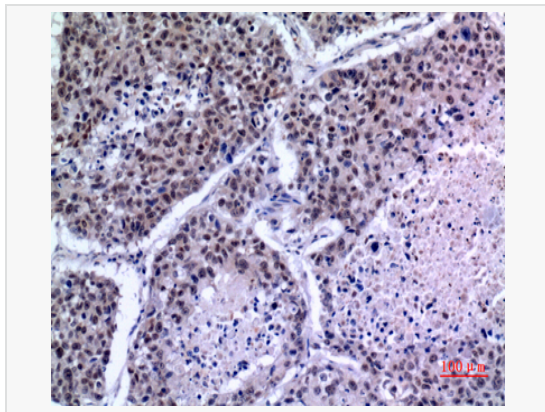
Application	WB, IHC-P/IF (Tissue-P), ELISA
Reactivity	Human, Mouse
Dilution	WB 1:500~1:1,000; IHC-P 1:50~1:100; ELISA 1:10,000
Host	Rabbit
Clonality	Polyclonal
Isotype	IgG
Label	Unconjugated
Immunogen	The antiserum was produced against synthesized peptide derived from human KLF13 around the non-acetylation site of Lys166.
Format	Buffer System: Liquid in PBS containing 50% glycerol, 0.5% BSA and 0.02% sodium azide, pH 7.3. Purification: Affinity Purified.
Storage	Shipped on wet ice. Store at -20°C. Stable for 24 months from date of receipt. Aliquoting is unnecessary for -20°C storage.
Precautions	Anti-KLF13 antibody is for research use only and not for use in diagnostic or therapeutic procedures.

### Protein Information

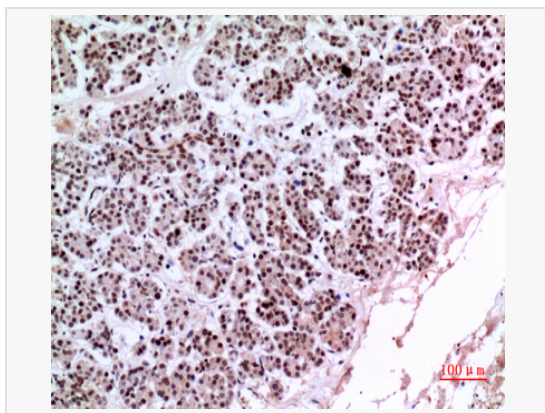
Synonyms	KLF13, BTEB3, NSLP1, Krueppel-like factor 13, Basic transcription element-binding protein 3, BTE-binding protein 3, Novel Sp1-like zinc finger transcription factor 1, RANTES factor of late activated T-lymphocytes 1, RFLAT-1, Transcription factor BTEB3, Transcription factor NSLP1.
Calculated MW	Calculated MW: 31 kDa; Observed MW: 31 kDa
Uniprot ID	Q9Y2Y9
Gene ID	51621
Background	Represses transcription by binding to the BTE site, a GC-rich DNA element, in competition with the activator SP1.



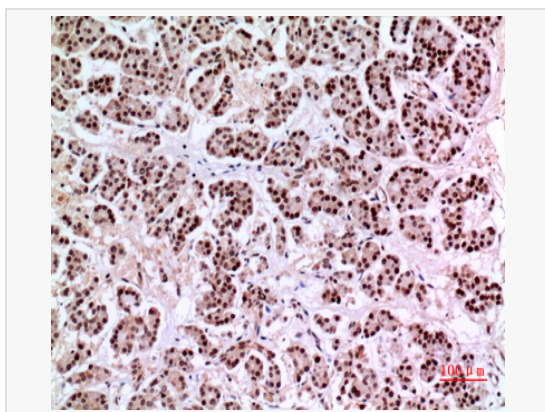
Western blot analysis of KLF13 in L929 lysates using KLF13 antibody.



Immunohistochemistry analysis of paraffin-embedded Human lung using KLF13 antibody. High-pressure and temperature Sodium Citrate pH 6.0 was used for antigen retrieval.



Immunohistochemistry analysis of paraffin-embedded Human pancreas using KLF13 antibody. High-pressure and temperature Sodium Citrate pH 6.0 was used for antigen retrieval.



Immunohistochemistry analysis of paraffin-embedded Human pancreas using KLF13 antibody. High-pressure and temperature Sodium Citrate pH 6.0 was used for antigen retrieval.