

Anti-Phospho-LRRK2 (Ser395) Rabbit pAb

Purified Rabbit Polyclonal Antibody

Catalog # P012435

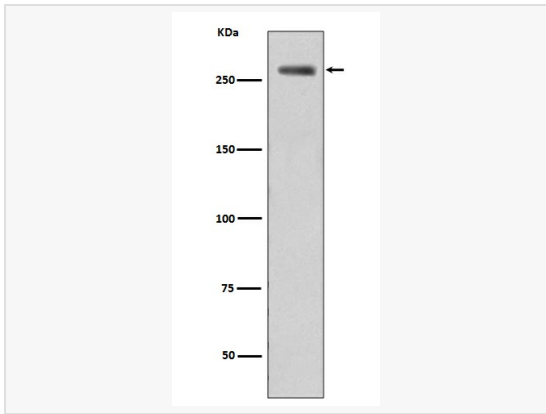
Product Information

Application	WB, ICC/IF (Cell), ELISA
Reactivity	Human, Mouse
Dilution	WB 1:500~1:1,000; IF 1:50~1:200
Host	Rabbit
Clonality	Polyclonal
Isotype	IgG
Label	Unconjugated
Immunogen	A synthesized peptide derived from human Phospho-LRRK2 (S935)
Format	Buffer System: Rabbit IgG in phosphate buffered saline, pH 7.4, 150mM NaCl, 0.02% sodium azide and 50% glycerol. Purification: Affinity Chromatography
Storage	Shipped on wet ice. Store at -20°C. Stable for 24 months from date of receipt. Aliquoting is unnecessary for -20°C storage.
Precautions	Anti-Phospho-LRRK2 (Ser395) antibody is for research use only and not for use in diagnostic or therapeutic procedures.

Protein Information

Synonyms	AURAI7, Dardarin antibody, , Leucine rich repeat kinase 2, LRRK 2 antibody, LRRK2, LRRK2_HUMAN, PARK 8, PARK8, RIPK7, ROCO 2, ROCO2.
Calculated MW	Calculated MW: 286 kDa; Observed MW: 286 kDa
Uniprot ID	Q5S007
Gene ID	120892
Background	Positively regulates autophagy through a calcium-dependent activation of the CaMKK/AMPK signaling pathway. The process involves activation of nicotinic acid adenine dinucleotide phosphate (NAADP) receptors, increase in lysosomal pH, and calcium release from lysosomes. Together with RAB29, plays a role in the retrograde trafficking pathway for recycling proteins, such as mannose 6 phosphate receptor (M6PR), between lysosomes and the Golgi apparatus in a retromer-dependent manner.

Validation Images



Western blot analysis of Filamin A Phosphorylation in WTLRRK2 lysates treated LRRK2 using Phospho-LRRK2 (Ser395) antibody.