

Anti-Phospho-CREB (Ser133) Rabbit pAb

Purified Rabbit Polyclonal Antibody

Catalog # P013076

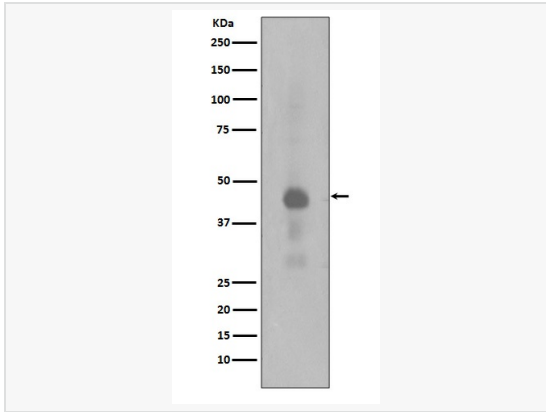
Product Information

Application	ELISA, WB, IHC-P/IF (Tissue-P), ICC/IF (Cell), IP, FC
Reactivity	Human, Mouse, Rat
Dilution	WB 1:500~1:1,000; IHC-P 1:50~1:100; IF 1:50~1:200; IP 1:20; FC 1:50~1:100
Host	Rabbit
Clonality	Polyclonal
Isotype	IgG
Label	Unconjugated
Immunogen	A synthesized peptide derived from human Phospho-Creb (S133)
Format	Buffer System: Rabbit IgG in phosphate buffered saline, pH 7.4, 150mM NaCl, 0.02% sodium azide and 50% glycerol. Purification: Affinity Chromatography
Storage	Shipped on wet ice. Store at -20°C. Stable for 24 months from date of receipt. Aliquoting is unnecessary for -20°C storage.
Precautions	Anti-Phospho-CREB (Ser133) antibody is for research use only and not for use in diagnostic or therapeutic procedures.

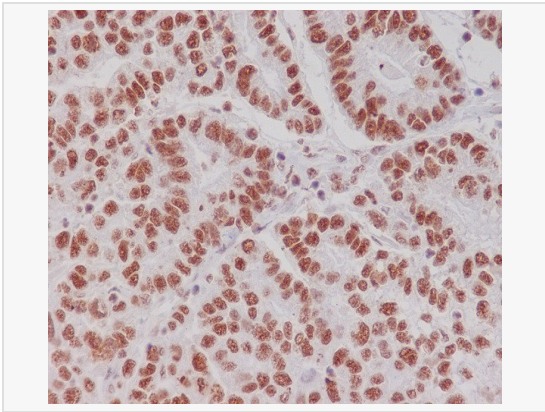
Protein Information

Synonyms	CREB1, Cyclic AMP-responsive element-binding protein 1, CREB-1, cAMP-responsive element-binding protein 1.
Calculated MW	Calculated MW: 35 kDa; Observed MW: 46 kDa
Uniprot ID	P16220
Gene ID	1385
Background	This gene encodes a transcription factor that is a member of the leucine zipper family of DNA binding proteins. This protein binds as a homodimer to the cAMP-responsive element, an octameric palindrome.

Validation Images



Western blot analysis of Phospho-Creb (Ser133) in HeLa lysates treated with Calyculin A using Phospho-CREB (Ser133) antibody.



Immunohistochemistry analysis of paraffin-embedded Human gastric carcinoma using Phospho-Creb (S133) antibody. High-pressure and temperature Sodium Citrate pH 6.0 was used for antigen retrieval.