

## Anti-TRIB3 Rabbit pAb

Purified Rabbit Polyclonal Antibody

Catalog # P011513

### Product Information

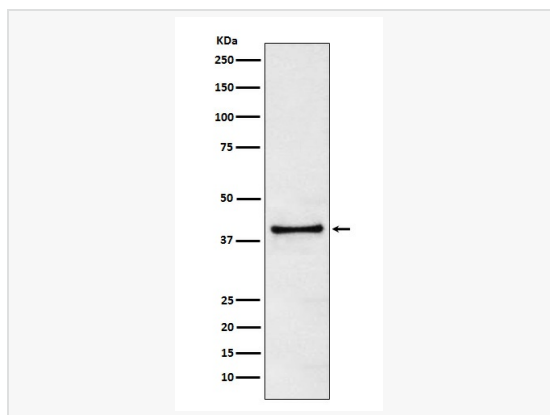
Application	WB, IP, ELISA
Reactivity	Human
Dilution	WB 1:500~1:1,000; IP 1:20
Host	Rabbit
Clonality	Polyclonal
Isotype	IgG
Label	Unconjugated
Immunogen	A synthesized peptide derived from human TRIB3
Format	Buffer System: Rabbit IgG in phosphate buffered saline, pH 7.4, 150mM NaCl, 0.02% sodium azide and 50% glycerol. Purification: Affinity Chromatography
Storage	Shipped on wet ice. Store at -20°C. Stable for 24 months from date of receipt. Aliquoting is unnecessary for -20°C storage.
Precautions	Anti-TRIB3 antibody is for research use only and not for use in diagnostic or therapeutic procedures.

### Protein Information

Synonyms	C20orf97, NIPK, SINK, SKIP3, TRB3, Trib3, Tribbles homolog 3, Tribbles pseudokinase 3, Tribbles3.
Calculated MW	Calculated MW: 40 kDa; Observed MW: 40 kDa
Uniprot ID	Q96RU7
Gene ID	57761
Background	Disrupts insulin signaling by binding directly to Akt kinases and blocking their activation. May bind directly to and mask the 'Thr-308' phosphorylation site in AKT1. Binds to ATF4 and inhibits its transcriptional activation activity. Interacts with the NF-kappa-B transactivator p65 RELA and inhibits its phosphorylation and thus its transcriptional activation activity.

## Validation Images

---



Western blot analysis of TRIB3 in 293T lysates using TRIB3 antibody.