

Anti-Macro H2A.1 Rabbit pAb

Purified Rabbit Polyclonal Antibody

Catalog # P011847

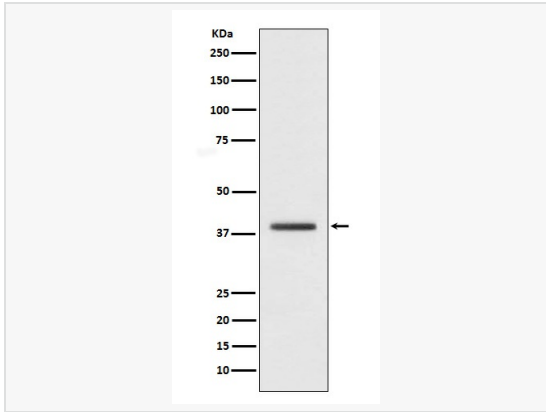
Product Information

Application	WB, IHC-P/IF (Tissue-P), ICC/IF (Cell), ELISA
Reactivity	Human, Mouse, Rat
Dilution	WB 1:500~1:1,000; IHC-P 1:50~1:100; IF 1:50~1:200
Host	Rabbit
Clonality	Polyclonal
Isotype	IgG
Label	Unconjugated
Immunogen	A synthesized peptide derived from human macroH2A.1
Format	Buffer System: Rabbit IgG in phosphate buffered saline, pH 7.4, 150mM NaCl, 0.02% sodium azide and 50% glycerol. Purification: Affinity Chromatography
Storage	Shipped on wet ice. Store at -20°C. Stable for 24 months from date of receipt. Aliquoting is unnecessary for -20°C storage.
Precautions	Anti-Macro H2A.1 antibody is for research use only and not for use in diagnostic or therapeutic procedures.

Protein Information

Synonyms	H2Ay, H2A/y, mH2A1, H2AF12M, MACROH2A11, macroH2A12.
Calculated MW	Calculated MW: 40 kDa; Observed MW: 40 kDa
Uniprot ID	O75367
Gene ID	9555
Background	Involved in stable X chromosome inactivation. Inhibits the binding of transcription factors and interferes with the activity of remodeling SWI/SNF complexes. Inhibits histone acetylation by EP300 and recruits class I HDACs, which induces an hypoacetylated state of chromatin.

Validation Images



Western blot analysis of macroH2A.1 in HepG2 lysates using Macro H2A.1 antibody.