

Anti-Thymidine Kinase Rabbit pAb

Purified Rabbit Polyclonal Antibody

Catalog # P012940

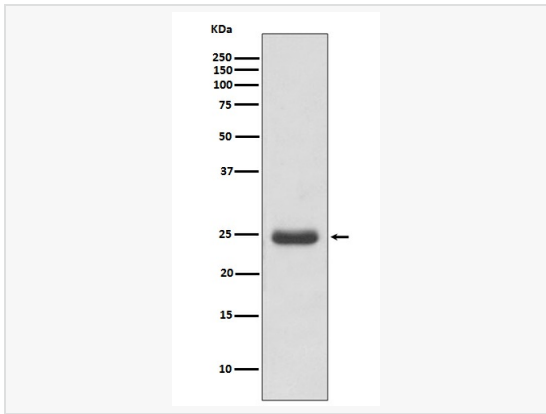
Product Information

Application	ELISA, WB, IHC-P/IF (Tissue-P), ICC/IF (Cell), IP, FC
Reactivity	Human
Dilution	WB 1:500~1:1,000; IHC-P 1:50~1:100; IF 1:50~1:200; IP 1:20; FC 1:50~1:100
Host	Rabbit
Clonality	Polyclonal
Isotype	IgG
Label	Unconjugated
Immunogen	A synthesized peptide derived from human Thymidine Kinase 1
Format	Buffer System: Rabbit IgG in phosphate buffered saline, pH 7.4, 150mM NaCl, 0.02% sodium azide and 50% glycerol. Purification: Affinity Chromatography
Storage	Shipped on wet ice. Store at -20°C. Stable for 24 months from date of receipt. Aliquoting is unnecessary for -20°C storage.
Precautions	Anti-Thymidine Kinase antibody is for research use only and not for use in diagnostic or therapeutic procedures.

Protein Information

Synonyms	EC 27121, KITH, TK-1, TK1, Thymidine kinase 1, cytosolic.
Calculated MW	Calculated MW: 25 kDa; Observed MW: 25 kDa
Uniprot ID	P04183
Gene ID	7083
Background	TK is a cytosolic thymidine kinase. Phosphorylated during mitosis. Its enzymatic activity is high in proliferating cells and peaks during the S-phase of the cell cycle; it is very low in resting cells.

Validation Images



Western blot analysis of Thymidine Kinase 1 in Molt4 lysates using Thymidine Kinase antibody.