

Anti-14-3-3 theta Rabbit pAb

Purified Rabbit Polyclonal Antibody

Catalog # P010575

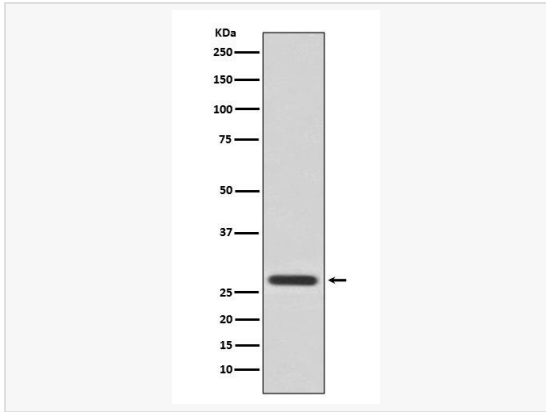
Product Information

Application	WB, ICC/IF (Cell), FC, ELISA
Reactivity	Human, Mouse, Rat
Dilution	WB 1:500~1:1,000; IF 1:50~1:200; FC 1:50~1:100
Host	Rabbit
Clonality	Polyclonal
Isotype	IgG
Label	Unconjugated
Immunogen	A synthesized peptide derived from human 14-3-3 Theta
Format	Buffer System: Rabbit IgG in phosphate buffered saline, pH 7.4, 150mM NaCl, 0.02% sodium azide and 50% glycerol. Purification: Affinity Chromatography
Storage	Shipped on wet ice. Store at -20°C. Stable for 24 months from date of receipt. Aliquoting is unnecessary for -20°C storage.
Precautions	Anti-14-3-3 theta antibody is for research use only and not for use in diagnostic or therapeutic procedures.

Protein Information

Synonyms	YWHAQ, 14-3-3 protein theta, 14-3-3 protein T-cell, 14-3-3 protein tau, Protein HS1.
Calculated MW	Calculated MW: 28 kDa; Observed MW: 28 kDa
Uniprot ID	P27348
Gene ID	10971
Background	Adapter protein implicated in the regulation of a large spectrum of both general and specialized signaling pathways. Binds to a large number of partners, usually by recognition of a phosphoserine or phosphothreonine motif. Binding generally results in the modulation of the activity of the binding partner.

Validation Images



Western blot analysis of 14-3-3 Theta in HeLa lysates using 14-3-3 theta antibody.